

ARG64256
anti-PAX6 antibodyPackage: 100 µg
Store at: -20°C

Summary

Product Description	Goat Polyclonal antibody recognizes PAX6
Tested Reactivity	Ms
Predict Reactivity	Hu, Rat
Tested Application	WB
Specificity	This antibody is expected to recognise both reported isoforms (NP_000271.1 and NP_001595.2).
Host	Goat
Clonality	Polyclonal
Isotype	IgG
Target Name	PAX6
Species	Human
Immunogen	C-REEKLRNQRQASN
Conjugation	Un-conjugated
Alternate Names	MGDA; Aniridia type II protein; AN; Oculorhombin; Paired box protein Pax-6; AN2; WAGR; FVH1; D11S812E

Application Instructions

Application table	Application	Dilution
	WB	0.3 - 1 µg/ml
Application Note	WB: Recommend incubate at RT for 1h. * The dilutions indicate recommended starting dilutions and the optimal dilutions or concentrations should be determined by the scientist.	

Properties

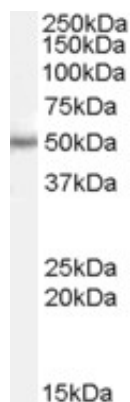
Form	Liquid
Purification	Purified from goat serum by antigen affinity chromatography.
Buffer	Tris saline (pH 7.3), 0.02% Sodium azide and 0.5% BSA.
Preservative	0.02% Sodium azide
Stabilizer	0.5% BSA
Concentration	0.5 mg/ml
Storage instruction	For continuous use, store undiluted antibody at 2-8°C for up to a week. For long-term storage, aliquot and store at -20°C or below. Storage in frost free freezers is not recommended. Avoid repeated freeze/thaw cycles. Suggest spin the vial prior to opening. The antibody solution should be gently mixed before use.

Note For laboratory research only, not for drug, diagnostic or other use.

Bioinformation

Database links	GeneID: 18508 Mouse Swiss-port # P63015 Mouse
Background	This gene encodes paired box gene 6, one of many human homologs of the <i>Drosophila melanogaster</i> gene <i>prd</i> . In addition to the hallmark feature of this gene family, a conserved paired box domain, the encoded protein also contains a homeo box domain. Both domains are known to bind DNA and function as regulators of gene transcription. This gene is expressed in the developing nervous system, and in developing eyes. Mutations in this gene are known to cause ocular disorders such as aniridia and Peter's anomaly. Alternatively spliced transcript variants encoding multiple isoforms have been observed for this gene. [provided by RefSeq, May 2012]
Research Area	Controls and Markers antibody; Developmental Biology antibody; Gene Regulation antibody; Neuroscience antibody
Calculated Mw	47 kDa
PTM	Ubiquitinated by TRIM11, leading to ubiquitination and proteasomal degradation.

Images



ARG64256 anti-PAX6 antibody WB image

Western Blot: Mouse Eye lysate (35 µg protein in RIPA buffer) stained with ARG64256 anti-PAX6 antibody at 0.5 µg/ml dilution.