

ARG65037 anti-SLC7A5 / LAT1 antibody

Package: 100 µg
Store at: -20°C

Summary

| | |
|---------------------|---|
| Product Description | Goat Polyclonal antibody recognizes SLC7A5 / LAT1 |
| Tested Reactivity | Hu |
| Predict Reactivity | Dog |
| Tested Application | WB |
| Host | Goat |
| Clonality | Polyclonal |
| Isotype | IgG |
| Target Name | SLC7A5 / LAT1 |
| Species | Human |
| Immunogen | C-RHRKPELERPIKVN |
| Conjugation | Un-conjugated |
| Alternate Names | MPE16; LAT1; CD98; D16S469E; Solute carrier family 7 member 5; 4F2LC; E16; Large neutral amino acids transporter small subunit 1; 4F2 LC; y+ system cationic amino acid transporter; Integral membrane protein E16; 4F2 light chain; hLAT1; L-type amino acid transporter 1; CD98 light chain |

Application Instructions

| Application table | Application | Dilution |
|-------------------|--|-------------|
| | WB | 1 - 3 µg/ml |
| Application Note | WB: Recommend incubate at RT for 1h. * The dilutions indicate recommended starting dilutions and the optimal dilutions or concentrations should be determined by the scientist. | |

Properties

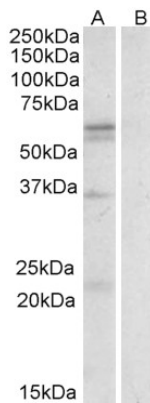
| | |
|---------------------|--|
| Form | Liquid |
| Purification | Purified from goat serum by antigen affinity chromatography. |
| Buffer | Tris saline (pH 7.3), 0.02% Sodium azide and 0.5% BSA. |
| Preservative | 0.02% Sodium azide |
| Stabilizer | 0.5% BSA |
| Concentration | 0.5 mg/ml |
| Storage instruction | For continuous use, store undiluted antibody at 2-8°C for up to a week. For long-term storage, aliquot and store at -20°C or below. Storage in frost free freezers is not recommended. Avoid repeated freeze/thaw cycles. Suggest spin the vial prior to opening. The antibody solution should be gently mixed before use. |

Note For laboratory research only, not for drug, diagnostic or other use.

Bioinformation

| | |
|----------------|---|
| Database links | GeneID: 8140 Human Swiss-port # Q01650 Human |
| Gene Symbol | SLC7A5 |
| Gene Full Name | solute carrier family 7 (amino acid transporter light chain, L system), member 5 |
| Function | Sodium-independent, high-affinity transport of large neutral amino acids such as phenylalanine, tyrosine, leucine, arginine and tryptophan, when associated with SLC3A2/4F2hc. Involved in cellular amino acid uptake. Acts as an amino acid exchanger. Involved in the transport of L-DOPA across the blood-brain barrier, and that of thyroid hormones triiodothyronine (T3) and thyroxine (T4) across the cell membrane in tissues such as placenta. Plays a role in neuronal cell proliferation (neurogenesis) in brain. Involved in the uptake of methylmercury (MeHg) when administered as the L-cysteine or D,L-homocysteine complexes, and hence plays a role in metal ion homeostasis and toxicity. Involved in the cellular activity of small molecular weight nitrosothiols, via the stereoselective transport of L-nitrosocysteine (L-CNSO) across the transmembrane. May play an important role in high-grade gliomas. Mediates blood-to-retina L-leucine transport across the inner blood-retinal barrier which in turn may play a key role in maintaining large neutral amino acids as well as neurotransmitters in the neural retina. Acts as the major transporter of tyrosine in fibroblasts. [UniProt] |
| Research Area | Metabolism antibody; Signaling Transduction antibody |
| Calculated Mw | 55 kDa |

Images



ARG65037 anti-SLC7A5 / LAT1 antibody WB image

Western blot: Human spleen lysate (35 µg protein in RIPA buffer) with (B) and without (A) blocking with the immunising peptide. stained with ARG65037 anti-SLC7A5 / LAT1 antibody at 0.3 µg/ml dilution.