

ARG65340 Mouse IgG2b Isotype Control antibody [MPC-11] (APC)

Package: 100 µg
Store at: 4°C

Summary

Product Description	APC-conjugated Mouse Monoclonal antibody [MPC-11] as a negative control antibody for Mouse IgG2b
Species Does Not React With	Hu, Ms, Rat
Tested Application	FACS
Specificity	This mouse IgG2b kappa monoclonal antibody (clone MPC-11) reacts with an epitope irrelevant for a variety of resting, activated, live, and fixed human, mouse, and rat tissues.
Host	Mouse
Clonality	Monoclonal
Clone	MPC-11
Isotype	IgG2b
Target Name	Mouse IgG2b
Immunogen	KLH-coupled trinitrophenol
Conjugation	APC
Alternate Names	IgG2b; Igh-3; gamma2b

Application Instructions

Application table	Application	Dilution
	FACS	1 - 10 µg/ml

Application Note * The dilutions indicate recommended starting dilutions and the optimal dilutions or concentrations should be determined by the scientist.

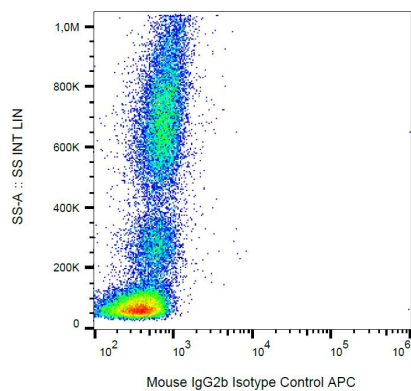
Properties

Form	Liquid
Purification Note	The purified antibody is conjugated with cross-linked Allophycocyanin (APC) under optimum conditions. The conjugate is purified by size-exclusion chromatography.
Buffer	PBS, 15 mM Sodium azide and 0.2% (w/v) high-grade protease free BSA
Preservative	15 mM Sodium azide
Stabilizer	0.2% (w/v) high-grade protease free BSA
Concentration	0.1 mg/ml
Storage instruction	Aliquot and store in the dark at 2-8°C. Keep protected from prolonged exposure to light. Avoid repeated freeze/thaw cycles. Suggest spin the vial prior to opening. The antibody solution should be gently mixed before use.
Note	For laboratory research only, not for drug, diagnostic or other use.

Bioinformation

Gene Symbol	Ighg2b
Gene Full Name	immunoglobulin heavy constant gamma 2B
Research Area	Controls and Markers antibody

Images



ARG65340 Mouse IgG2b Isotype Control antibody [MPC-11] (APC)
FACS image

Flow Cytometry: Human peripheral blood stained with ARG65340 Mouse IgG2b Isotype Control antibody [MPC-11] (APC) at 1 $\mu\text{g}/\text{ml}$ dilution.