

ARG65453 anti-CD107a / LAMP1 antibody [H4A3] (azide free)

Package: 100 µg, 50 µg
Store at: -20°C

Summary

Product Description	Azide free Mouse Monoclonal antibody [H4A3] recognizes CD107a / LAMP1
Tested Reactivity	Hu, Ms, Rat, NHuPrm
Tested Application	EM, FACS, ICC/IF, IHC-Fr, IHC-P, IP, Puri, WB
Specificity	The mouse monoclonal antibody H4A3 recognizes LAMP1 / CD107a, an approximately 100120 kDa glycoprotein expressed mainly on lysosomal, but also on the plasma membrane.
Host	Mouse
Clonality	Monoclonal
Clone	H4A3
Isotype	IgG1
Target Name	CD107a / LAMP1
Species	Human
Immunogen	Human PBMC
Conjugation	Un-conjugated
Alternate Names	LGP120; CD107a; LAMPA; CD antigen CD107a; Lysosome-associated membrane glycoprotein 1; CD107 antigen-like family member A; LAMP-1; Lysosome-associated membrane protein 1

Application Instructions

Application table	Application	Dilution
	EM	Assay-dependent
	FACS	Assay-dependent
	ICC/IF	Assay-dependent
	IHC-Fr	Assay-dependent
	IHC-P	Assay-dependent
	IP	Assay-dependent
	Puri	Assay-dependent
	WB	1 µg/ml

Application Note * The dilutions indicate recommended starting dilutions and the optimal dilutions or concentrations should be determined by the scientist.

Properties

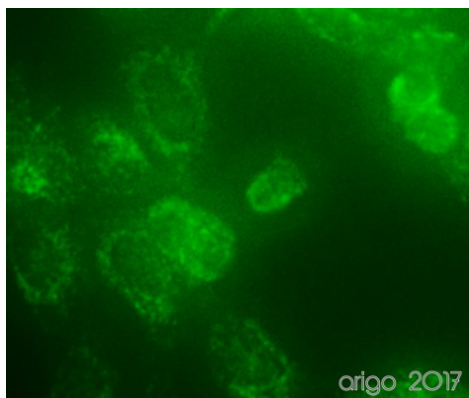
Form	Liquid
------	--------

Purification	Purified from cell culture supernatant by protein-A affinity chromatography.
Purity	> 95% (by SDS-PAGE)
Buffer	BBS (pH 8.2)
Concentration	0.1 mg/ml
Storage instruction	For continuous use, store undiluted antibody at 2-8°C for up to a week. For long-term storage, aliquot and store at -20°C or below. Storage in frost free freezers is not recommended. Avoid repeated freeze/thaw cycles. Suggest spin the vial prior to opening. The antibody solution should be gently mixed before use.
Note	For laboratory research only, not for drug, diagnostic or other use.

Bioinformation

Gene Symbol	LAMP1
Gene Full Name	lysosomal-associated membrane protein 1
Background	CD107a (lysosome-associated membrane protein-1, LAMP-1), together with LAMP-2, is a major constituent of lysosomal membrane, 1-2% of total CD107a is found also on the plasma membrane. The LAMP proteins are involved in lysosome biogenesis and are required for fusion of lysosomes with phagosomes. Increased CD107a immunoreactivity is observed in neurones, and in glial cells surrounding senile plaques in Alzheimers disease cases and is localized mainly in medullary epithelial cells, single macrophages and lymphocytes in acute thymic involution. CD107a is a good marker of mast cell activation.
Function	Presents carbohydrate ligands to selectins. Also implicated in tumor cell metastasis. [UniProt]
Highlight	Related products: LAMP1 antibodies ; LAMP1 Duos / Panels ; Anti-Mouse IgG secondary antibodies ; Related news: Baking soda restores circadian clock in tumor cells
Research Area	Cancer antibody; Cell Death antibody; Controls and Markers antibody; Developmental Biology antibody; Metabolism antibody; Neuroscience antibody; Signaling Transduction antibody; Lysosome Marker antibody
Calculated Mw	45 kDa
PTM	O- and N-glycosylated; some of the 18 N-linked glycans are polylactosaminoglycans. The glycosylation of N-76 is essential for Lassa virus entry into cells.

Images

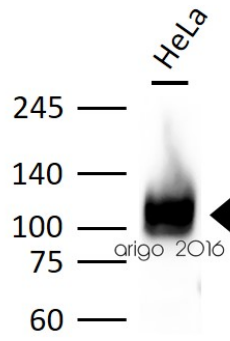


ARG65453 anti-CD107a / LAMP1 antibody [H4A3] (azide free) ICC/IF image

Immunofluorescence: 100% Methanol fixed (RT, 10 min) HeLa cells stained with ARG65453 anti-CD107a / LAMP1 antibody [H4A3] (azide free) at 1:50 dilution.

Secondary antibody: [ARG55393](#) Goat anti-Mouse IgG (H+L) antibody (FITC)

ARG65453 anti-CD107a / LAMP1 antibody [H4A3] (azide free) WB image



Western blot: 30 µg of HeLa cell lysate stained with ARG65453 anti-CD107a / LAMP1 antibody [H4A3] (azide free) at 1:1000 dilution.