

ARG65471 anti-CD28 antibody [JJ319]

Package: 100 µg
Store at: -20°C

Summary

Product Description	Mouse Monoclonal antibody [JJ319] recognizes CD28
Tested Reactivity	Rat
Tested Application	FACS, FuncSt, IP
Specificity	The clone JJ319 reacts with CD28, a disulfide-linked homodimeric type I glycoprotein (monomer of Mw 44 kDa) which is a critical costimulatory receptor of T cells. _x000D_
Host	Mouse
Clonality	Monoclonal
Clone	JJ319
Isotype	IgG1
Target Name	CD28
Species	Rat
Immunogen	Mouse A20J B lymphoma cells transfected with rat CD28
Conjugation	Un-conjugated
Alternate Names	Tp44; TP44; T-cell-specific surface glycoprotein CD28; CD antigen CD28

Application Instructions

Application table	Application	Dilution
	FACS	2 - 5 µg/ml
	FuncSt	Assay-dependent
	IP	Assay-dependent
Application Note	Functional studies: In vitro costimulation. * The dilutions indicate recommended starting dilutions and the optimal dilutions or concentrations should be determined by the scientist.	

Properties

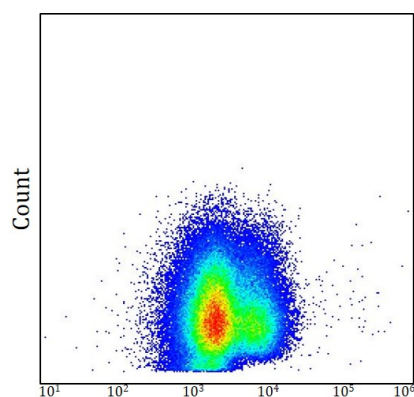
Form	Liquid
Purification	Purified from cell culture supernatant by protein-A affinity chromatography.
Purity	> 95% (by SDS-PAGE)
Buffer	PBS (pH 7.4) and 15 mM Sodium azide
Preservative	15 mM Sodium azide
Concentration	1 mg/ml

Storage instruction	For continuous use, store undiluted antibody at 2-8°C for up to a week. For long-term storage, aliquot and store at -20°C or below. Storage in frost free freezers is not recommended. Avoid repeated freeze/thaw cycles. Suggest spin the vial prior to opening. The antibody solution should be gently mixed before use.
Note	For laboratory research only, not for drug, diagnostic or other use.

Bioinformation

Database links	GeneID: 25660 Rat Swiss-port # P31042 Rat
Gene Symbol	Cd28
Gene Full Name	Cd28 molecule
Background	CD28 is the critical T cell costimulatory receptor which provides to the cell the important second activation signal by binding CD80 and CD86 that are expressed by antigen presenting cells. Besides its costimulation role CD28 functions in preventing T cells from anergic hyporesponsive state or from undergoing premature apoptotic cell death. Its analog CTLA-4, expressed on the surface of activated T cells, has higher affinity to CD80 and CD86 than CD28 and downregulates T cell activity.
Function	Involved in T-cell activation, the induction of cell proliferation and cytokine production and promotion of T-cell survival. [UniProt]
Research Area	Developmental Biology antibody; Immune System antibody; Cytotoxic T Cell Surface Study antibody
Calculated Mw	25 kDa
PTM	CD40LG induces tyrosine phosphorylation of isoform 3.

Images



ARG65471 anti-CD28 antibody [JJ319] FACS image

Flow Cytometry: Rat splenocytes suspension stained with ARG65471 anti-CD28 antibody [JJ319] at 4 µg/ml dilution.