

ARG65528 anti-CD34 antibody [QBEND/10] (azide free)

Package: 50 µg
Store at: -20°C

Summary

Product Description	Azide free Mouse Monoclonal antibody [QBEND/10] recognizes CD34 (Endothelial Cell Marker)
Tested Reactivity	Hu, Ms, NHuPrm, Rb
Species Does Not React With	Rat, Bov, Dog, Sheep
Tested Application	FACS, FuncSt, IHC-Fr, IHC-P, IP, WB
Specificity	The antibody recognizes the CD34 antigen, some cross reactions with vascular associated adventitia and some basement membranes. Clone QBEND/10 immunoprecipitates a glycoprotein with a relative MW 110kD expressed on haematopoietic cells and on the established myeloid leukaemic cell line KG1A. The clone QBEND/10 recognises the Class II epitope on CD34.
Host	Mouse
Clonality	Monoclonal
Clone	QBEND/10
Isotype	IgG1, kappa
Target Name	CD34
Species	Human
Immunogen	Human endothelial vesicles
Conjugation	Un-conjugated
Alternate Names	Hematopoietic progenitor cell antigen CD34; CD antigen CD34

Application Instructions

Application table	Application	Dilution
	FACS	5 µg/ml
	FuncSt	Assay-dependent
	IHC-Fr	Assay-dependent
	IHC-P	2 - 8 µg/ml
	IP	Assay-dependent
	WB	1 - 2 µg/ml
Application Note	Functional Application: The antibody QBEnd-10 induces homotypic adhesion of leukemic cell line. * The dilutions indicate recommended starting dilutions and the optimal dilutions or concentrations should be determined by the scientist.	

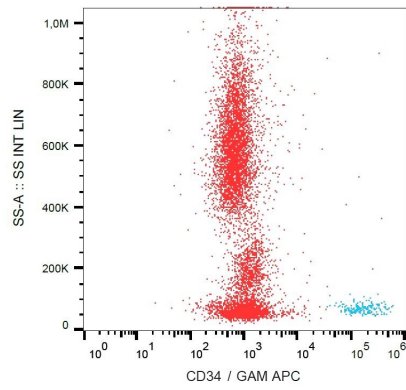
Properties

Form	Liquid
------	--------

Purification	Purification with Protein A.
Purification Note	0.2 µm filter sterilized.
Purity	> 95% (by SDS-PAGE)
Buffer	PBS (pH 7.4)
Concentration	1 mg/ml
Storage instruction	For continuous use, store undiluted antibody at 2-8°C for up to a week. For long-term storage, aliquot and store at -20°C or below. Storage in frost free freezers is not recommended. Avoid repeated freeze/thaw cycles. Suggest spin the vial prior to opening. The antibody solution should be gently mixed before use.
Note	For laboratory research only, not for drug, diagnostic or other use.

Bioinformation

Database links	GeneID: 12490 Mouse GeneID: 947 Human Swiss-port # P28906 Human Swiss-port # Q64314 Mouse
Gene Symbol	CD34
Gene Full Name	CD34 molecule
Background	CD34 protein may play a role in the attachment of stem cells to the bone marrow extracellular matrix or to stromal cells. This single-pass membrane protein is highly glycosylated and phosphorylated by protein kinase C. Two transcript variants encoding different isoforms have been found for this gene. [provided by RefSeq, Aug 2011]
Function	CD34 is a possible adhesion molecule with a role in early hematopoiesis by mediating the attachment of stem cells to the bone marrow extracellular matrix or directly to stromal cells. Could act as a scaffold for the attachment of lineage specific glycans, allowing stem cells to bind to lectins expressed by stromal cells or other marrow components. Presents carbohydrate ligands to selectins. [UniProt]
Research Area	Cancer antibody; Cell Biology and Cellular Response antibody; Controls and Markers antibody; Developmental Biology antibody; Immune System antibody; Neuroscience antibody; Pro-B Cell Marker antibody; Endothelial Cell Marker antibody; Angiogenesis Study antibody
Calculated Mw	41 kDa
PTM	Highly glycosylated. Phosphorylated on serine residues by PKC.



ARG65528 anti-CD34 antibody [QBEND/10] (azide free) FACS image

Flow Cytometry: Human peripheral blood stained with ARG65528 anti-CD34 antibody [QBEND/10] (azide free), followed by incubation with APC labelled Goat anti-Mouse secondary antibody.