

ARG65543 anti-CD157 / BST1 antibody [SY11B5]

Package: 100 µg

Store at: -20°C

Summary

Product Description	Mouse Monoclonal antibody [SY11B5] recognizes CD157 / BST1
Tested Reactivity	Hu, NHuPrm
Tested Application	FACS, IHC-Fr, IP, WB
Specificity	The mouse monoclonal antibody SY11B5 recognizes CD157, an approximately 45 kDa GPIanchored protein expressed mainly on monocytes, macrophages, granulocytes and bone marrow stromal cells.
Host	Mouse
Clonality	Monoclonal
Clone	SY11B5
Isotype	IgG1
Target Name	CD157 / BST1
Species	Human
Immunogen	Human CD157
Conjugation	Un-conjugated
Alternate Names	cADPr hydrolase 2; ADP-ribosyl cyclase 2; Cyclic ADP-ribose hydrolase 2; BST-1; Bone marrow stromal antigen 1; CD157; ADP-ribosyl cyclase/cyclic ADP-ribose hydrolase 2; CD antigen CD157; EC 3.2.2.6

Application Instructions

Application table	Application	Dilution
	FACS	1 - 12 µg/ml
	IHC-Fr	5 - 10 µg/ml
	IP	Assay-dependent
	WB	Assay-dependent
Application Note	WB: Under non-reducing condition. * The dilutions indicate recommended starting dilutions and the optimal dilutions or concentrations should be determined by the scientist.	

Properties

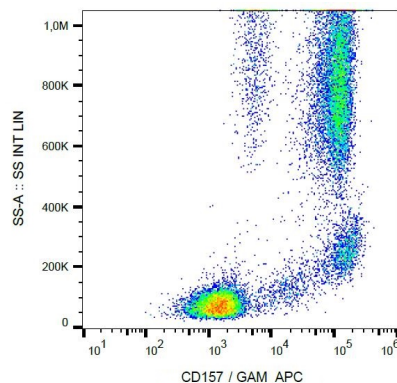
Form	Liquid
Purification	Purified from hybridoma culture supernatant by protein-A affinity chromatography.
Purity	> 95% (by SDS-PAGE)
Buffer	PBS (pH 7.4) and 15 mM Sodium azide
Preservative	15 mM Sodium azide

Concentration	1 mg/ml
Storage instruction	For continuous use, store undiluted antibody at 2-8°C for up to a week. For long-term storage, aliquot and store at -20°C or below. Storage in frost free freezers is not recommended. Avoid repeated freeze/thaw cycles. Suggest spin the vial prior to opening. The antibody solution should be gently mixed before use.
Note	For laboratory research only, not for drug, diagnostic or other use.

Bioinformation

Database links	GeneID: 683 Human Swiss-port # Q10588 Human
Gene Symbol	BST1
Gene Full Name	bone marrow stromal cell antigen 1
Background	CD157 (cADPr hydrolase 2) is a GPI-anchored ectoenzyme possessing ADP-ribosyl cyclase and cyclic ADP-ribose hydrolase activity. It uses NAD and cADP-ribose as substrates. CD157 is expressed on granulocytes, monocytes, macrophages, follicular dendritic cells, bone marrow stromal cells and human umbilical cord vein endothelial cells. In case of rheumatoid arthritis expression is often higher and it is also differentially expressed in the myeloid leukemias. It may also have a signaling role.
Function	Synthesizes the second messengers cyclic ADP-ribose and nicotinate-adenine dinucleotide phosphate, the former a second messenger that elicits calcium release from intracellular stores. May be involved in pre-B-cell growth. [UniProt]
Research Area	Immune System antibody; Signaling Transduction antibody
Calculated Mw	36 kDa

Images



ARG65543 anti-CD157 / BST1 antibody [SY11B5] FACS image

Flow Cytometry: Human peripheral blood leukocytes stained with ARG65543 anti-CD157 / BST1 antibody [SY11B5], followed by incubation with APC labelled Goat anti-Mouse secondary antibody.