

ARG65655 anti-Lamin B1 (isoform 1) antibody

Package: 100 µg
Store at: -20°C

Summary

Product Description	Goat Polyclonal antibody recognizes Lamin B1 (isoform 1)
Tested Reactivity	Hu
Predict Reactivity	Cow, Pig
Tested Application	WB
Specificity	This antibody is expected to recognize isoform 1 (NP_005564.1) only.
Host	Goat
Clonality	Polyclonal
Target Name	Lamin B1 (isoform 1)
Species	Human
Immunogen	Synthetic peptide around the internal region of Human Lamin B1 (C-KESDLNGAQIKLRE)
Conjugation	Un-conjugated
Alternate Names	LMN2; ADLD; Lamin-B1; LMN; LMNB

Application Instructions

Application table	Application	Dilution
	WB	0.1 - 0.3 µg/ml

Application Note
WB: Recommend incubate at RT for 1h.
* The dilutions indicate recommended starting dilutions and the optimal dilutions or concentrations should be determined by the scientist.

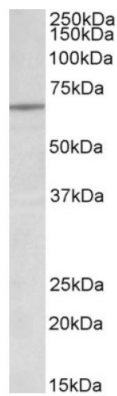
Properties

Form	Liquid
Purification	Affinity purified
Buffer	Tris saline (pH 7.3), 0.02% Sodium azide and 0.5% BSA.
Preservative	0.02% Sodium azide
Stabilizer	0.5% BSA
Concentration	0.5 mg/ml
Storage instruction	For continuous use, store undiluted antibody at 2-8°C for up to a week. For long-term storage, aliquot and store at -20°C or below. Storage in frost free freezers is not recommended. Avoid repeated freeze/thaw cycles. Suggest spin the vial prior to opening. The antibody solution should be gently mixed before use.
Note	For laboratory research only, not for drug, diagnostic or other use.

Bioinformation

Database links	GeneID: 4001 Human Swiss-port # P20700 Human
Gene Symbol	LMNB1
Gene Full Name	lamin B1
Background	The nuclear lamina consists of a two-dimensional matrix of proteins located next to the inner nuclear membrane. The lamin family of proteins make up the matrix and are highly conserved in evolution. During mitosis, the lamina matrix is reversibly disassembled as the lamin proteins are phosphorylated. Lamin proteins are thought to be involved in nuclear stability, chromatin structure and gene expression. Vertebrate lamins consist of two types, A and B. This gene encodes one of the two B type proteins, B1. Alternative splicing results in transcript variants and a duplication of this gene is associated with autosomal dominant adult-onset leukodystrophy (ADLD). [provided by RefSeq, Oct 2010]
Function	Lamins are components of the nuclear lamina, a fibrous layer on the nucleoplasmic side of the inner nuclear membrane, which is thought to provide a framework for the nuclear envelope and may also interact with chromatin. [UniProt]
Research Area	Cancer antibody; Cell Biology and Cellular Response antibody; Cell Death antibody; Controls and Markers antibody; Signaling Transduction antibody; NRF-2 Nuclear Localization Study antibody
Calculated Mw	66.4 kDa (NP_005564.1)
PTM	B-type lamins undergo a series of modifications, such as farnesylation and phosphorylation. Increased phosphorylation of the lamins occurs before envelope disintegration and probably plays a role in regulating lamin associations.

Images



ARG65655 anti-Lamin B1 (isoform 1) antibody WB image

Western blot: 35 µg of Jurkat cell lysate stained with ARG65655 anti-Lamin B1 (isoform 1) antibody at 0.2 µg/ml dilution (1 hour incubation).