

ARG66030
anti-CXCL5 antibody (Biotin)Package: 50 µg
Store at: 4°C

Summary

Product Description	Biotin-conjugated Rabbit Polyclonal antibody recognizes CXCL5
Tested Reactivity	Hu
Tested Application	ELISA, WB
Host	Rabbit
Clonality	Polyclonal
Isotype	IgG
Target Name	CXCL5
Species	Human
Immunogen	E. coli derived recombinant around aa. 5-78 of Human CXCL5. (AAVLRRLRCV CLQTTQGVHP KMISNLQVFA IGPOCSKVEV VASLKNGKEI CLDPEAPFLK KVIQKILDGG NKEN)
Conjugation	Biotin
Alternate Names	Neutrophil-activating peptide ENA-78; Epithelial-derived neutrophil-activating protein 78; SCYB5; Small-inducible cytokine B5; C-X-C motif chemokine 5; 9-78; 8-78; 1-78; ENA-78

Application Instructions

Application table	Application	Dilution
	ELISA	Direct: 0.25 - 1.0 µg/ml Sandwich: 0.25 - 1.0 µg/ml with ARG66029 as a capture antibody
	WB	0.1 - 0.2 µg/ml
Application Note	* The dilutions indicate recommended starting dilutions and the optimal dilutions or concentrations should be determined by the scientist.	

Properties

Form	Liquid
Purification	Purified by affinity chromatography.
Buffer	PBS (pH 7.2)
Concentration	1 mg/ml
Storage instruction	Aliquot and store in the dark at 2-8°C. Keep protected from prolonged exposure to light. Avoid repeated freeze/thaw cycles. Suggest spin the vial prior to opening. The antibody solution should be gently mixed before use.
Note	For laboratory research only, not for drug, diagnostic or other use.

Bioinformation

Database links

[GeneID: 6374 Human](#)

[Swiss-port # P42830 Human](#)

Gene Symbol

CXCL5

Gene Full Name

chemokine (C-X-C motif) ligand 5

Background

This gene encodes a protein that is a member of the CXC subfamily of chemokines. Chemokines, which recruit and activate leukocytes, are classified by function (inflammatory or homeostatic) or by structure. This protein is proposed to bind the G-protein coupled receptor chemokine (C-X-C motif) receptor 2 to recruit neutrophils, to promote angiogenesis and to remodel connective tissues. This protein is thought to play a role in cancer cell proliferation, migration, and invasion. [provided by RefSeq, May 2013]

Function

Involved in neutrophil activation. In vitro, ENA-78(8-78) and ENA-78(9-78) show a threefold higher chemotactic activity for neutrophil granulocytes. [UniProt]

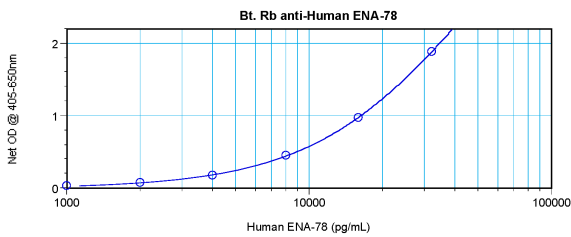
Calculated Mw

12 kDa

PTM

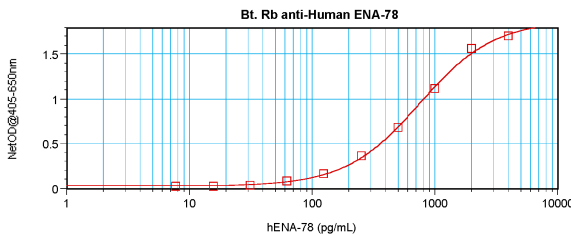
N-terminal processed forms ENA-78(8-78) and ENA-78(9-78) are produced by proteolytic cleavage after secretion from peripheral blood monocytes.

Images



ARG66030 anti-CXCL5 antibody (Biotin) standard curve image

Direct ELISA: ARG66030 anti-CXCL5 antibody (Biotin) at 0.25 - 1.0 $\mu\text{g/ml}$ results of a typical standard run with optical density reading at 405 - 650 nm.



ARG66030 anti-CXCL5 antibody (Biotin) standard curve image

Sandwich ELISA: ARG66030 anti-CXCL5 antibody (Biotin) as a detection antibody at 0.25 - 1.0 $\mu\text{g/ml}$ combined with ARG66029 anti-CXCL5 antibody as a capture antibody. Results of a typical standard run with optical density reading at 405 - 650 nm.