

ARG66037
anti-CXCL6 antibodyPackage: 50 µg
Store at: -20°C

Summary

Product Description	Rabbit Polyclonal antibody recognizes CXCL6
Tested Reactivity	Hu
Tested Application	ELISA, Neut, WB
Host	Rabbit
Clonality	Polyclonal
Isotype	IgG
Target Name	CXCL6
Species	Human
Immunogen	E. coli derived recombinant Human CXCL6. (VLTELRTCL RVTLRVNPKT IGKLVFPAG PQCSKVEVVA SLKNGKQVCL DPEAPFLKKV IQKILDSGNK KN)
Conjugation	Un-conjugated
Alternate Names	GCP2; SCYB6; GCP-2; Chemokine alpha 3; Granulocyte chemotactic protein 2; Small-inducible cytokine B6; C-X-C motif chemokine 6; CKA-3

Application Instructions

Application table	Application	Dilution
	ELISA	Sandwich: 0.5 - 2.0 µg/ml with ARG66038 as a detection antibody
	Neut	2.0 - 5.0 µg/ml (To yield [ND50] of the biological activity of hGCP-2 (100.0 ng/ml))
	WB	0.1 - 0.2 µg/ml

Application Note * The dilutions indicate recommended starting dilutions and the optimal dilutions or concentrations should be determined by the scientist.

Properties

Form	Liquid
Purification	Affinity purification with immunogen.
Buffer	PBS (pH 7.2)
Concentration	1 mg/ml
Storage instruction	For continuous use, store undiluted antibody at 2-8°C for up to a week. For long-term storage, aliquot and store at -20°C or below. Storage in frost free freezers is not recommended. Avoid repeated freeze/thaw cycles. Suggest spin the vial prior to opening. The antibody solution should be gently mixed before use.
Note	For laboratory research only, not for drug, diagnostic or other use.

Bioinformation

Database links

[GeneID: 6372 Human](#)

[Swiss-port # P80162 Human](#)

Gene Symbol

CXCL6

Gene Full Name

chemokine (C-X-C motif) ligand 6

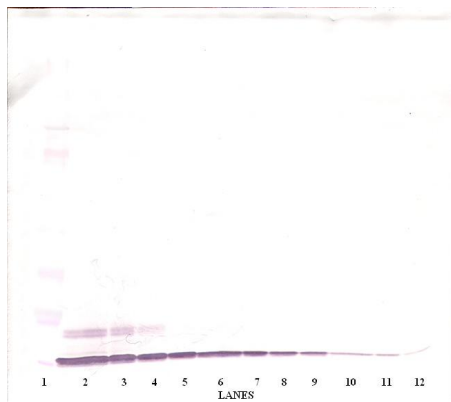
Function

Chemotactic for neutrophil granulocytes. Signals through binding and activation of its receptors (CXCR1 and CXCR2). In addition to its chemotactic and angiogenic properties, it has strong antibacterial activity against Gram-positive and Gram-negative bacteria (90-fold-higher when compared to CXCL5 and CXCL7). [UniProt]

Calculated Mw

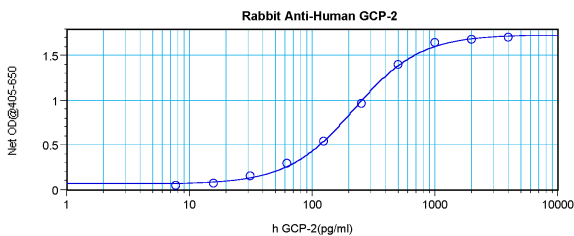
12 kDa

Images



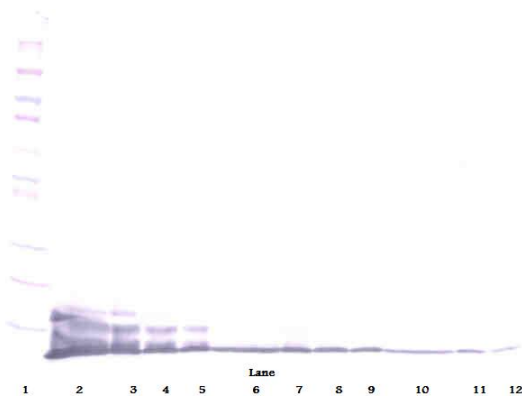
ARG66037 anti-CXCL6 antibody WB image

Western blot: 250 - 0.24 ng of Human GCP-2 stained with ARG66037 anti-CXCL6 antibody, under non-reducing conditions.



ARG66037 anti-CXCL6 antibody standard curve image

Sandwich ELISA: ARG66037 anti-CXCL6 antibody as a capture antibody at 0.5 - 2.0 µg/ml combined with ARG66038 anti-CXCL6 antibody (Biotin) as a detection antibody. Results of a typical standard run with optical density reading at 405 - 650 nm.



ARG66037 anti-CXCL6 antibody WB image

Western blot: 250 - 0.24 ng of Human GCP-2 stained with ARG66037 anti-CXCL6 antibody, under reducing conditions.