

## ARG66038 anti-CXCL6 antibody (Biotin)

Package: 50 µg  
Store at: 4°C

### Summary

Product Description	Biotin-conjugated Rabbit Polyclonal antibody recognizes CXCL6
Tested Reactivity	Hu
Tested Application	ELISA, WB
Host	Rabbit
Clonality	Polyclonal
Isotype	IgG
Target Name	CXCL6
Species	Human
Immunogen	E. coli derived recombinant Human CXCL6. (VLTELRTCL RVTLRVNPKT IGKLQVFPAG PQCSKVEVVA SLKNGKQVCL DPEAPFLKKV IQKILDSGK KN)
Conjugation	Biotin
Alternate Names	GCP2; SCYB6; GCP-2; Chemokine alpha 3; Granulocyte chemotactic protein 2; Small-inducible cytokine B6; C-X-C motif chemokine 6; CKA-3

### Application Instructions

Application table	Application	Dilution
	ELISA	Direct: 0.25 - 1.0 µg/ml Sandwich: 0.25 - 1.0 µg/ml with ARG66037 as a capture antibody
	WB	0.1 - 0.2 µg/ml
Application Note	* The dilutions indicate recommended starting dilutions and the optimal dilutions or concentrations should be determined by the scientist.	

### Properties

Form	Liquid
Purification	Purified by affinity chromatography.
Buffer	PBS (pH 7.2)
Concentration	1 mg/ml
Storage instruction	Aliquot and store in the dark at 2-8°C. Keep protected from prolonged exposure to light. Avoid repeated freeze/thaw cycles. Suggest spin the vial prior to opening. The antibody solution should be gently mixed before use.
Note	For laboratory research only, not for drug, diagnostic or other use.

### Bioinformation

Database links

[GeneID: 6372 Human](#)

[Swiss-port # P80162 Human](#)

Gene Symbol

CXCL6

Gene Full Name

chemokine (C-X-C motif) ligand 6

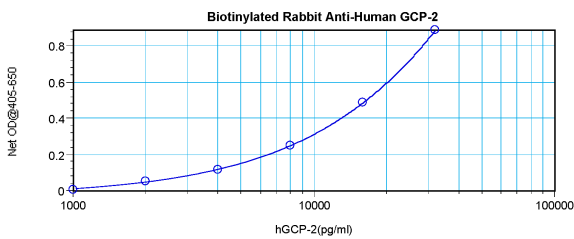
Function

Chemotactic for neutrophil granulocytes. Signals through binding and activation of its receptors (CXCR1 and CXCR2). In addition to its chemotactic and angiogenic properties, it has strong antibacterial activity against Gram-positive and Gram-negative bacteria (90-fold-higher when compared to CXCL5 and CXCL7). [UniProt]

Calculated Mw

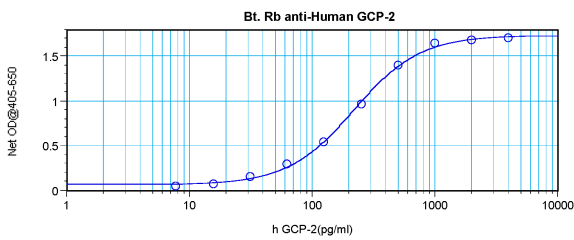
12 kDa

## Images



ARG66038 anti-CXCL6 antibody (Biotin) standard curve image

Direct ELISA: ARG66038 anti-CXCL6 antibody (Biotin) at 0.25 - 1.0 µg/ml results of a typical standard run with optical density reading at 405 - 650 nm.



ARG66038 anti-CXCL6 antibody (Biotin) standard curve image

Sandwich ELISA: ARG66038 anti-CXCL6 antibody (Biotin) as a detection antibody at 0.25 - 1.0 µg/ml combined with ARG66037 anti-CXCL6 antibody as a capture antibody. Results of a typical standard run with optical density reading at 405 - 650 nm.