

ARG66057 anti-CD154 / CD40L antibody

Package: 50 µg
Store at: -20°C

Summary

Product Description	Goat Polyclonal antibody recognizes CD154 / CD40L
Tested Reactivity	Hu
Tested Application	ELISA, WB
Host	Goat
Clonality	Polyclonal
Isotype	IgG
Target Name	CD154 / CD40L
Species	Human
Immunogen	E. coli derived recombinant Human CD154 / CD40L. (MQKGDQNPQI AAHVISEASS KTTSVLQWAE KGYTMSNNL VTLENGKQLT VKRQGLYYIY AQTFCNSRE ASSQAPFIAS LWLKSPGRFE RILLRAANTH SSAKPCGQQS IHLGGVFELQ PGASVFNVT DPSQVSHGTG FTSFGLLKL)
Conjugation	Un-conjugated
Alternate Names	TNFSF5; IMD3; T-cell antigen Gp39; HIGM1; CD40-L; gp39; CD40 ligand; Tumor necrosis factor ligand superfamily member 5; CD40L; CD154; TRAP; CD antigen CD154; hCD40L; IGM; T-BAM; TNF-related activation protein

Application Instructions

Application table	Application	Dilution
	ELISA	Sandwich: 0.5 - 2.0 µg/ml with ARG66058 as a detection antibody
	WB	0.1 - 0.2 µg/ml

Application Note * The dilutions indicate recommended starting dilutions and the optimal dilutions or concentrations should be determined by the scientist.

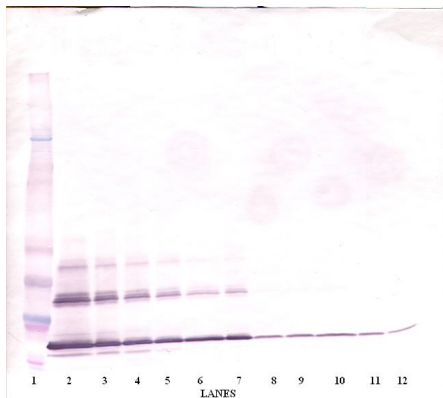
Properties

Form	Liquid
Purification	Affinity purification with immunogen.
Buffer	PBS (pH 7.2)
Concentration	1 mg/ml
Storage instruction	For continuous use, store undiluted antibody at 2-8°C for up to a week. For long-term storage, aliquot and store at -20°C or below. Storage in frost free freezers is not recommended. Avoid repeated freeze/thaw cycles. Suggest spin the vial prior to opening. The antibody solution should be gently mixed before use.
Note	For laboratory research only, not for drug, diagnostic or other use.

Bioinformation

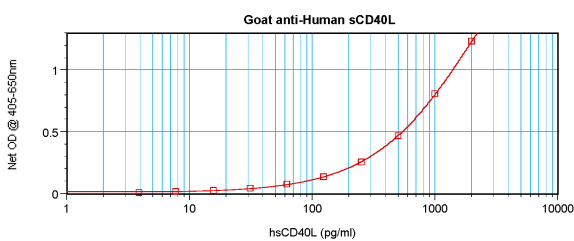
Database links	GeneID: 959 Human Swiss-port # P29965 Human
Gene Symbol	CD40LG
Gene Full Name	CD40 ligand
Background	The protein encoded by this gene is expressed on the surface of T cells. It regulates B cell function by engaging CD40 on the B cell surface. A defect in this gene results in an inability to undergo immunoglobulin class switch and is associated with hyper-IgM syndrome. [provided by RefSeq, Jul 2008]
Function	Mediates B-cell proliferation in the absence of co-stimulus as well as IgE production in the presence of IL-4. Involved in immunoglobulin class switching. Release of soluble CD40L from platelets is partially regulated by GP IIb/IIIa, actin polymerization, and an matrix metalloproteinases (MMP) inhibitor-sensitive pathway. [UniProt]
Calculated Mw	29 kDa
PTM	The soluble form derives from the membrane form by proteolytic processing. N-linked glycan is a mixture of high mannose and complex type. Glycan structure does not influence binding affinity to CD40. Not O-glycosylated.

Images



ARG66057 anti-CD154 / CD40L antibody WB image

Western blot: 250 - 0.24 ng of Human sCD40-Ligand stained with ARG66057 anti-CD154 / CD40L antibody, under non-reducing conditions.



ARG66057 anti-CD154 / CD40L antibody standard curve image

Sandwich ELISA: ARG66057 anti-CD154 / CD40L antibody as a capture antibody at 0.5 - 2.0 µg/ml combined with ARG66058 anti-CD154 / CD40L antibody (Biotin) as a detection antibody. Results of a typical standard run with optical density reading at 405 - 650 nm.

ARG66057 anti-CD154 / CD40L antibody WB image

Western blot: 250 - 0.24 ng of Human sCD40-Ligand stained with ARG66057 anti-CD154 / CD40L antibody, under reducing conditions.

