

ARG66088 anti-IL22 antibody

Package: 50 µg
Store at: -20°C

Summary

Product Description	Rabbit Polyclonal antibody recognizes IL22
Tested Reactivity	Hu
Tested Application	ELISA, Neut, WB
Host	Rabbit
Clonality	Polyclonal
Isotype	IgG
Target Name	IL22
Species	Human
Immunogen	E. coli derived recombinant Human IL22. (MAPISSHCRL DKSNFQQPYI TNRTFMLAKE ASLADNNTDV RLIGEKLFHG VSMSECYLM KQVLNFTLEE VLFPQSDRFQ PYMQEVPFL ARLSNRLSTC HIEGDDLHIQ RNVQKLKDTV KKLGESGEIK AIGELDLLFM SLRNACI)
Conjugation	Un-conjugated
Alternate Names	Interleukin-22; zcyto18; IL-TIF; IL-22; IL-21; IL-D110; TIFa; ILTIF; TIFIL-23; IL-10-related T-cell-derived-inducible factor; Cytokine Zcyto18

Application Instructions

Application table	Application	Dilution
	ELISA	Sandwich: 0.5 - 2.0 µg/ml with ARG66089 as a detection antibody
	Neut	1.25 µg/ml (To yield [ND50] of the biological activity of Human IL-22 (50.0 ng/ml))
	WB	0.1 - 0.2 µg/ml

Application Note * The dilutions indicate recommended starting dilutions and the optimal dilutions or concentrations should be determined by the scientist.

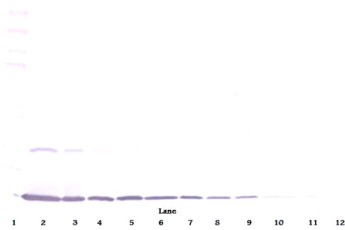
Properties

Form	Liquid
Purification	Affinity purification with immunogen.
Buffer	PBS (pH 7.2)
Concentration	1 mg/ml
Storage instruction	For continuous use, store undiluted antibody at 2-8°C for up to a week. For long-term storage, aliquot and store at -20°C or below. Storage in frost free freezers is not recommended. Avoid repeated freeze/thaw cycles. Suggest spin the vial prior to opening. The antibody solution should be gently mixed before use.
Note	For laboratory research only, not for drug, diagnostic or other use.

Bioinformation

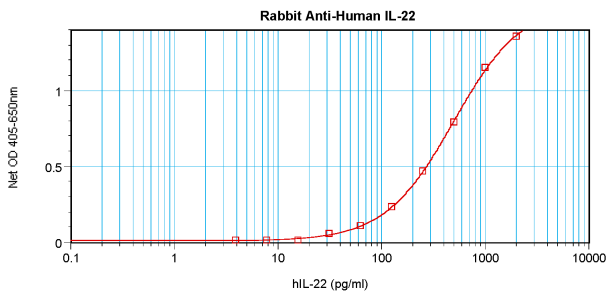
Database links	GeneID: 50616 Human Swiss-port # Q9GZX6 Human
Gene Symbol	IL22
Gene Full Name	interleukin 22
Function	Cytokine that contributes to the inflammatory response in vivo. [UniProt]
Calculated Mw	20 kDa

Images



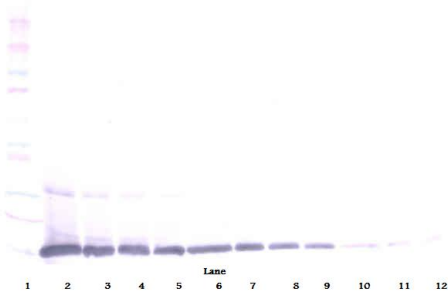
ARG66088 anti-IL22 antibody WB image

Western blot: 250 - 0.24 ng of Human IL-22 stained with ARG66088 anti-IL22 antibody, under non-reducing conditions.



ARG66088 anti-IL22 antibody standard curve image

Sandwich ELISA: ARG66088 anti-IL22 antibody as a capture antibody at 0.5 - 2.0 $\mu\text{g}/\text{ml}$ combined with ARG66089 anti-IL22 antibody (Biotin) as a detection antibody. Results of a typical standard run with optical density reading at 405 - 650 nm.



ARG66088 anti-IL22 antibody WB image

Western blot: 250 - 0.24 ng of Human IL-22 stained with ARG66088 anti-IL22 antibody, under reducing conditions.