

ARG66407 anti-MMP10 antibody

Package: 100 µg
Store at: -20°C

Summary

Product Description	Rabbit Polyclonal antibody recognizes MMP10
Tested Reactivity	Hu
Tested Application	ICC/IF, IHC-P, WB
Host	Rabbit
Clonality	Polyclonal
Isotype	IgG
Target Name	MMP10
Species	Human
Immunogen	Synthetic peptide corresponding to aa. 330-410 of Human MMP10.
Conjugation	Un-conjugated
Alternate Names	SL-2; STMY2; Transin-2; EC 3.4.24.22; Matrix metalloproteinase-10; MMP-10; Stromelysin-2

Application Instructions

Application table	Application	Dilution
	ICC/IF	1:200 - 1:1000
	IHC-P	1:100 - 1:300
	WB	1:500 - 1:2000
Application Note	* The dilutions indicate recommended starting dilutions and the optimal dilutions or concentrations should be determined by the scientist.	
Observed Size	~ 50 kDa	

Properties

Form	Liquid
Purification	Affinity purification with immunogen.
Buffer	PBS, 0.02% Sodium azide, 50% Glycerol and 0.5% BSA.
Preservative	0.02% Sodium azide
Stabilizer	50% Glycerol and 0.5% BSA
Concentration	1 mg/ml
Storage instruction	For continuous use, store undiluted antibody at 2-8°C for up to a week. For long-term storage, aliquot and store at -20°C. Storage in frost free freezers is not recommended. Avoid repeated freeze/thaw cycles. Suggest spin the vial prior to opening. The antibody solution should be gently mixed before use.

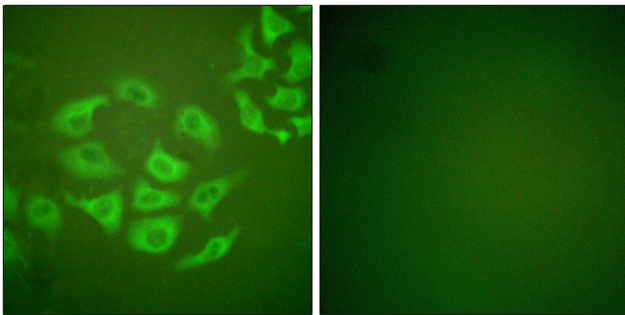
Note

For laboratory research only, not for drug, diagnostic or other use.

Bioinformation

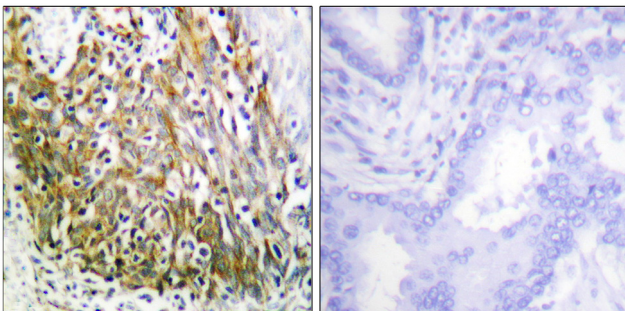
Gene Symbol	MMP10
Gene Full Name	matrix metalloproteinase 10
Background	Proteins of the matrix metalloproteinase (MMP) family are involved in the breakdown of extracellular matrix in normal physiological processes, such as embryonic development, reproduction, and tissue remodeling, as well as in disease processes, such as arthritis and metastasis. Most MMP's are secreted as inactive proproteins which are activated when cleaved by extracellular proteinases. The enzyme encoded by this gene degrades proteoglycans and fibronectin. The gene is part of a cluster of MMP genes which localize to chromosome 11q22.3. [provided by RefSeq, Jul 2008]
Function	Can degrade fibronectin, gelatins of type I, III, IV, and V; weakly collagens III, IV, and V. Activates procollagenase. [UniProt]
Calculated Mw	54 kDa
Cellular Localization	Secreted, extracellular space, extracellular matrix. [UniProt]

Images



ARG66407 anti-MMP10 antibody ICC/IF image

Immunofluorescence: HepG2 cells stained with ARG66407 anti-MMP10 antibody (green). The picture on the right is blocked with the synthetic peptide.



ARG66407 anti-MMP10 antibody IHC-P image

Immunohistochemistry: Paraffin-embedded Human lung carcinoma stained with ARG66407 anti-MMP10 antibody. The picture on the right is blocked with the synthetic peptide.

ARG66407 anti-MMP10 antibody WB image

Western blot: 35 µg of A549 cell lysate stained with ARG66407 anti-MMP10 antibody at 1:1000 dilution.

