

**ARG66484**  
**anti-CDX2 antibody**Package: 100 µl  
Store at: -20°C

### Summary

Product Description	Mouse Monoclonal antibody recognizes CDX2
Tested Reactivity	Hu
Tested Application	IHC-P
Host	Mouse
Clonality	Monoclonal
Isotype	IgG1, kappa
Target Name	CDX2
Species	Human
Immunogen	Synthetic peptide derived from Human CDX2.
Conjugation	Un-conjugated
Alternate Names	CDX2/AS; CDX3; Homeobox protein CDX-2; CDX-3; Caudal-type homeobox protein 2

### Application Instructions

Application table	Application	Dilution
	IHC-P	1:20 - 1:100
Application Note	IHC-P: Antigen Retrieval: Tris/EDTA buffer (pH 8.0) was used. * The dilutions indicate recommended starting dilutions and the optimal dilutions or concentrations should be determined by the scientist.	

### Properties

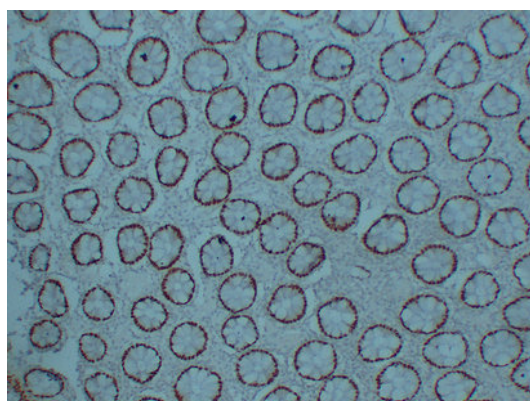
Form	Liquid
Purification	Affinity purification with immunogen.
Buffer	PBS, 0.02% Sodium azide, 50% Glycerol and 0.5% BSA.
Preservative	0.02% Sodium azide
Stabilizer	50% Glycerol and 0.5% BSA
Concentration	1 mg/ml
Storage instruction	For continuous use, store undiluted antibody at 2-8°C for up to a week. For long-term storage, aliquot and store at -20°C. Storage in frost free freezers is not recommended. Avoid repeated freeze/thaw cycles. Suggest spin the vial prior to opening. The antibody solution should be gently mixed before use.
Note	For laboratory research only, not for drug, diagnostic or other use.

### Bioinformation

Gene Symbol	CDX2
Gene Full Name	caudal type homeobox 2
Background	This gene is a member of the caudal-related homeobox transcription factor gene family. The encoded protein is a major regulator of intestine-specific genes involved in cell growth and differentiation. This protein also plays a role in early embryonic development of the intestinal tract. Aberrant expression of this gene is associated with intestinal inflammation and tumorigenesis. [provided by RefSeq, Jan 2012]
Function	Involved in the transcriptional regulation of multiple genes expressed in the intestinal epithelium. Important in broad range of functions from early differentiation to maintenance of the intestinal epithelial lining of both the small and large intestine. [UniProt]
Calculated Mw	34 kDa
PTM	Phosphorylation of Ser-60 mediates the transactivation capacity. [UniProt]
Cellular Localization	Nucleus. [UniProt]

## Images

---



ARG66484 anti-CDX2 antibody IHC-P image

Immunohistochemistry: Paraffin-embedded Human colon stained with ARG66484 anti-CDX2 antibody at 1:200 (4°C, overnight). Antigen Retrieval: Tris/EDTA buffer (pH 8.0) was used.