

ARG66785 anti-CD85f / LILRA5 antibody

Package: 100 µg
Store at: -20°C

Summary

Product Description	Rabbit Polyclonal antibody recognizes CD85f / LILRA5
Tested Reactivity	Hu
Tested Application	WB
Host	Rabbit
Clonality	Polyclonal
Isotype	IgG
Target Name	CD85f / LILRA5
Species	Human
Immunogen	Synthetic peptide corresponding to aa. 141-190 of Human CD85f / LILRA5.
Conjugation	Un-conjugated
Alternate Names	LILRB7; LIR9; Leukocyte immunoglobulin-like receptor subfamily A member 5; LIR-9; CD85 antigen-like family member F; CD85; Immunoglobulin-like transcript 11; ILT11; Leukocyte immunoglobulin-like receptor 9; ILT-11; CD antigen CD85f; CD85F

Application Instructions

Application table	Application	Dilution
	WB	1:500 - 1:2000
Application Note	* The dilutions indicate recommended starting dilutions and the optimal dilutions or concentrations should be determined by the scientist.	
Positive Control	HeLa	
Observed Size	~ 33 kDa	

Properties

Form	Liquid
Purification	Affinity purification with immunogen.
Buffer	PBS, 0.02% Sodium azide, 50% Glycerol and 0.5% BSA.
Preservative	0.02% Sodium azide
Stabilizer	50% Glycerol and 0.5% BSA
Concentration	1 mg/ml
Storage instruction	For continuous use, store undiluted antibody at 2-8°C for up to a week. For long-term storage, aliquot and store at -20°C. Storage in frost free freezers is not recommended. Avoid repeated freeze/thaw cycles. Suggest spin the vial prior to opening. The antibody solution should be gently mixed before use.

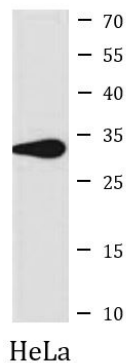
Note

For laboratory research only, not for drug, diagnostic or other use.

Bioinformation

Gene Symbol	LILRA5
Gene Full Name	leukocyte immunoglobulin-like receptor, subfamily A (with TM domain), member 5
Background	The protein encoded by this gene is a member of the leukocyte immunoglobulin-like receptor (LIR) family. LIR family members are known to have activating and inhibitory functions in leukocytes. Crosslink of this receptor protein on the surface of monocytes has been shown to induce calcium flux and secretion of several proinflammatory cytokines, which suggests the roles of this protein in triggering innate immune responses. This gene is one of the leukocyte receptor genes that form a gene cluster on the chromosomal region 19q13.4. Four alternatively spliced transcript variants encoding distinct isoforms have been described. [provided by RefSeq, Jul 2008]
Function	May play a role in triggering innate immune responses. Does not seem to play a role for any class I MHC antigen recognition. [UniProt]
Calculated Mw	33 kDa
Cellular Localization	Cell membrane; Single-pass type I membrane protein. Isoform 3: Secreted. [UniProt]

Images



ARG66785 anti-CD85f / LILRA5 antibody WB image

Western blot: HeLa cell lysate stained with ARG66785 anti-CD85f / LILRA5 antibody.