

## ARG66801 anti-GFAP antibody [SQab20213]

Package: 100 µl  
Store at: -20°C

### Summary

Product Description	Recombinant Rabbit Monoclonal antibody [SQab20213] recognizes GFAP
Tested Reactivity	Hu, Ms
Tested Application	IHC-P, WB
Host	Rabbit
Clonality	Monoclonal
Clone	SQab20213
Isotype	IgG
Target Name	GFAP
Species	Human
Immunogen	Synthetic peptide within aa. 332-432 of Human GFAP.
Conjugation	Un-conjugated
Alternate Names	Glial fibrillary acidic protein; ALXDRD; GFAP

### Application Instructions

Application table	Application	Dilution
	IHC-P	1:100 - 1:200
	WB	1:500 - 1:2000
Application Note	IHC-P: Antigen Retrieval: Heat mediation was performed in Tris/EDTA buffer (pH 9.0), primary antibody incubate at RT (18°C - 25°C) for 30 minutes. * The dilutions indicate recommended starting dilutions and the optimal dilutions or concentrations should be determined by the scientist.	

### Properties

Form	Liquid
Purification	Purification with Protein A.
Buffer	PBS, 0.01% Sodium azide, 40% Glycerol and 0.05% BSA.
Preservative	0.01% Sodium azide
Stabilizer	40% Glycerol and 0.05% BSA
Storage instruction	For continuous use, store undiluted antibody at 2-8°C for up to a week. For long-term storage, aliquot and store at -20°C. Storage in frost free freezers is not recommended. Avoid repeated freeze/thaw cycles. Suggest spin the vial prior to opening. The antibody solution should be gently mixed before use.
Note	For laboratory research only, not for drug, diagnostic or other use.

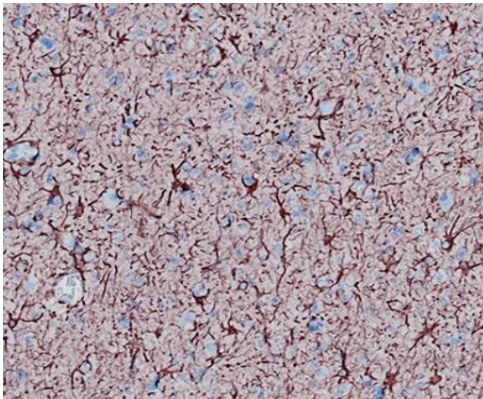
## Bioinformation

---

Gene Symbol	GFAP
Gene Full Name	glial fibrillary acidic protein
Background	This gene encodes one of the major intermediate filament proteins of mature astrocytes. It is used as a marker to distinguish astrocytes from other glial cells during development. Mutations in this gene cause Alexander disease, a rare disorder of astrocytes in the central nervous system. Alternative splicing results in multiple transcript variants encoding distinct isoforms. [provided by RefSeq, Oct 2008]
Function	GFAP, a class-III intermediate filament, is a cell-specific marker that, during the development of the central nervous system, distinguishes astrocytes from other glial cells. [UniProt]
Calculated Mw	50 kDa
PTM	Phosphorylated by PKN1. [UniProt]
Cellular Localization	Cytoplasm. Note=Associated with intermediate filaments. [UniProt]

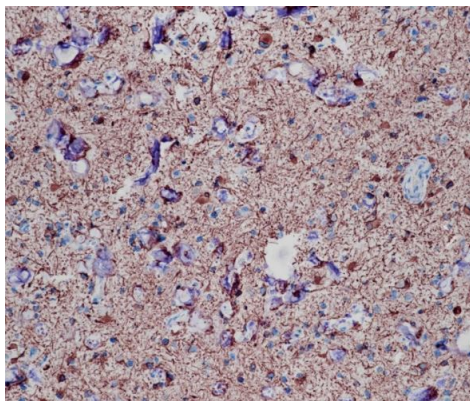
## Images

---



ARG66801 anti-GFAP antibody [SQab20213] IHC-P image

Immunohistochemistry: Formalin/PFA-fixed and paraffin-embedded Human astrocytoma tissue. Antigen Retrieval: Heat mediation was performed in Tris/EDTA buffer (pH 9.0). The tissue section was stained with ARG66801 anti-GFAP antibody [SQab20213].



ARG66801 anti-GFAP antibody [SQab20213] IHC-P image

Immunohistochemistry: Formalin/PFA-fixed and paraffin-embedded Human brain tissue. Antigen Retrieval: Heat mediation was performed in Tris/EDTA buffer (pH 9.0). The tissue section was stained with ARG66801 anti-GFAP antibody [SQab20213].

ARG66801 anti-GFAP antibody [SQab20213] WB image

Western blot: Mouse Brain stained with ARG66801 anti-GFAP antibody [SQab20213] at 1:1000 dilution.

