

ARG66836 anti-MUC13 / Mucin 13 antibody

Package: 100 µg
Store at: -20°C

Summary

Product Description	Rabbit Polyclonal antibody recognizes MUC13 / Mucin 13
Tested Reactivity	Hu
Tested Application	ICC/IF, IHC-P, WB
Host	Rabbit
Clonality	Polyclonal
Isotype	IgG
Target Name	MUC13 / Mucin 13
Species	Human
Immunogen	Synthetic peptide between aa. 421-470 of Human MUC13 / Mucin 13.
Conjugation	Un-conjugated
Alternate Names	MUC-13; DRCC1; Mucin-13; Down-regulated in colon cancer 1

Application Instructions

Application table	Application	Dilution
	ICC/IF	Assay-dependent
	IHC-P	Assay-dependent
	WB	1:500 - 1:2000
Application Note	* The dilutions indicate recommended starting dilutions and the optimal dilutions or concentrations should be determined by the scientist.	

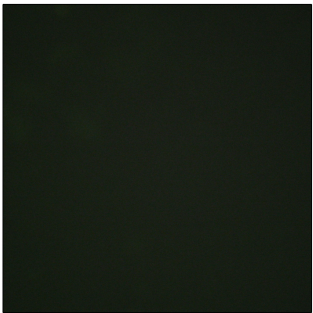
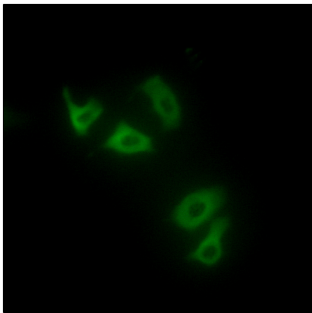
Properties

Form	Liquid
Purification	Affinity purification with immunogen.
Buffer	PBS, 0.02% Sodium azide, 50% Glycerol and 0.5% BSA.
Preservative	0.02% Sodium azide
Stabilizer	50% Glycerol and 0.5% BSA
Concentration	1 mg/ml
Storage instruction	For continuous use, store undiluted antibody at 2-8°C for up to a week. For long-term storage, aliquot and store at -20°C. Storage in frost free freezers is not recommended. Avoid repeated freeze/thaw cycles. Suggest spin the vial prior to opening. The antibody solution should be gently mixed before use.
Note	For laboratory research only, not for drug, diagnostic or other use.

Bioinformation

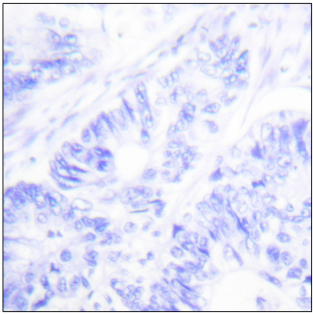
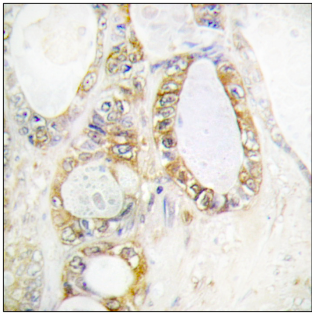
Gene Symbol	MUC13
Gene Full Name	mucin 13, cell surface associated
Background	Epithelial mucins, such as MUC13, are a family of secreted and cell surface glycoproteins expressed by ductal and glandular epithelial tissues (Williams et al., 2001 [PubMed 11278439]).[supplied by OMIM, Jul 2008]
Function	Epithelial and hemopoietic transmembrane mucin that may play a role in cell signaling. [UniProt]
Calculated Mw	55 kDa
PTM	Cleaved into two subunits, alpha and beta, probably between the first EGF domain and the SEA domain. Beta subunit contains the cytoplasmic tail and alpha subunit the extracellular tail. The homooligomerization into dimers is dependent on intrachain disulfide bonds. Highly N-glycosylated. [UniProt]
Cellular Localization	Cell membrane; Single-pass type I membrane protein. Apical cell membrane. Secreted. Note=Also exists as a soluble form. [UniProt]

Images



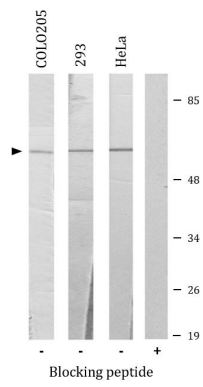
ARG66836 anti-MUC13 / Mucin 13 antibody ICC/IF image

Immunofluorescence: HepG2 cells stained with ARG66836 anti-MUC13 / Mucin 13 antibody. The picture on the right is blocked with the synthetic peptide.



ARG66836 anti-MUC13 / Mucin 13 antibody IHC-P image

Immunohistochemistry: Paraffin-embedded Human colon carcinoma tissue stained with ARG66836 anti-MUC13 / Mucin 13 antibody. The picture on the right is blocked with the synthetic peptide.



ARG66836 anti-MUC13 / Mucin 13 antibody WB image

Western blot: COLO205, 293 and HeLa cell lysates stained with ARG66836 anti-MUC13 / Mucin 13 antibody. The lane on the right is blocked with the synthetic peptide.