

## ARG66889 anti-FGF23 antibody

Package: 100 µg  
Store at: -20°C

### Summary

Product Description	Rabbit Polyclonal antibody recognizes FGF23
Tested Reactivity	Hu
Tested Application	ICC/IF, WB
Host	Rabbit
Clonality	Polyclonal
Isotype	IgG
Target Name	FGF23
Species	Human
Immunogen	Synthetic peptide within aa. 151-200 of Human FGF23.
Conjugation	Un-conjugated
Alternate Names	ADHR; Phosphatonin; HPDR2; FGFN; Tumor-derived hypophosphatemia-inducing factor; PHPTC; FGF-23; Fibroblast growth factor 23; HYPF

### Application Instructions

Application table	Application	Dilution
	ICC/IF	1:200 - 1:1000
	WB	1:500 - 1:2000
Application Note	* The dilutions indicate recommended starting dilutions and the optimal dilutions or concentrations should be determined by the scientist.	
Positive Control	Jurkat	
Observed Size	~ 28 kDa	

### Properties

Form	Liquid
Purification	Affinity purification with immunogen.
Buffer	PBS, 0.02% Sodium azide, 50% Glycerol and 0.5% BSA.
Preservative	0.02% Sodium azide
Stabilizer	50% Glycerol and 0.5% BSA
Concentration	1 mg/ml
Storage instruction	For continuous use, store undiluted antibody at 2-8°C for up to a week. For long-term storage, aliquot and store at -20°C. Storage in frost free freezers is not recommended. Avoid repeated freeze/thaw cycles. Suggest spin the vial prior to opening. The antibody solution should be gently mixed before use.

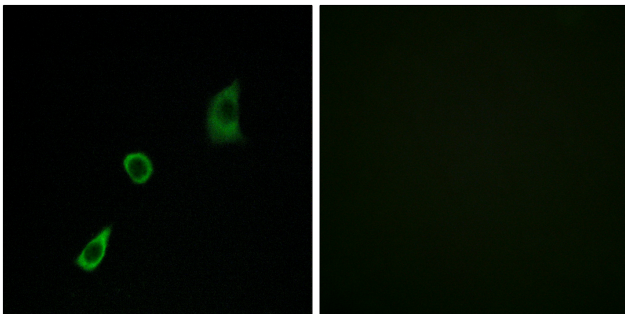
Note

For laboratory research only, not for drug, diagnostic or other use.

## Bioinformation

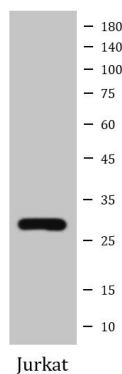
Gene Symbol	FGF23
Gene Full Name	fibroblast growth factor 23
Background	This gene encodes a member of the fibroblast growth factor family of proteins, which possess broad mitogenic and cell survival activities and are involved in a variety of biological processes. The product of this gene regulates phosphate homeostasis and transport in the kidney. The full-length, functional protein may be deactivated via cleavage into N-terminal and C-terminal chains. Mutation of this cleavage site causes autosomal dominant hypophosphatemic rickets (ADHR). Mutations in this gene are also associated with hyperphosphatemic familial tumoral calcinosis (HFTC). [provided by RefSeq, Feb 2013]
Function	Regulator of phosphate homeostasis. Inhibits renal tubular phosphate transport by reducing SLC34A1 levels. Upregulates EGR1 expression in the presence of KL (By similarity). Acts directly on the parathyroid to decrease PTH secretion (By similarity). Regulator of vitamin-D metabolism. Negatively regulates osteoblast differentiation and matrix mineralization. [UniProt]
Calculated Mw	28 kDa
PTM	Following secretion this protein is inactivated by cleavage into a N-terminal fragment and a C-terminal fragment. The processing is effected by proprotein convertases.  O-glycosylated by GALT3. Glycosylation is necessary for secretion; it blocks processing by proprotein convertases when the O-glycan is alpha 2,6-sialylated. Competition between proprotein convertase cleavage and block of cleavage by O-glycosylation determines the level of secreted active FGF23. [UniProt]
Cellular Localization	Secreted. Note=Secretion is dependent on O-glycosylation. [UniProt]

## Images



ARG66889 anti-FGF23 antibody ICC/IF image

Immunofluorescence: HUVEC cells stained with ARG66889 anti-FGF23 antibody. The picture on the right is blocked with the synthetic peptide.



ARG66889 anti-FGF23 antibody WB image

Western blot: Jurkat cell lysate stained with ARG66889 anti-FGF23 antibody at 1:1000 dilution, overnight at 4°C.