

**ARG66955**  
anti-Nestin antibodyPackage: 100 µl  
Store at: -20°C

### Summary

Product Description	Rabbit Polyclonal antibody recognizes Nestin
Tested Reactivity	Hu, Ms
Predict Reactivity	Rat
Tested Application	ICC/IF, IHC-P, WB
Host	Rabbit
Clonality	Polyclonal
Isotype	IgG
Target Name	Nestin
Species	Human
Immunogen	Synthetic peptide within the N-terminal region of Human Nestin.
Conjugation	Un-conjugated
Alternate Names	NES; Nestin FLJ21841; Nbla00170

### Application Instructions

Application table	Application	Dilution
	ICC/IF	1:200 - 1:500
	IHC-P	1:100 - 1:200
	WB	1:500 - 1:1000

**Application Note** \* The dilutions indicate recommended starting dilutions and the optimal dilutions or concentrations should be determined by the scientist.

### Properties

Form	Liquid
Purification	Affinity purified.
Buffer	100 mM Tris Glycine (pH 7.0), 0.025% ProClin 300 and 20% Glycerol.
Preservative	0.025% ProClin 300
Stabilizer	20% Glycerol
Storage instruction	For continuous use, store undiluted antibody at 2-8°C for up to a week. For long-term storage, aliquot and store at -20°C or below. Storage in frost free freezers is not recommended. Avoid repeated freeze/thaw cycles. Suggest spin the vial prior to opening. The antibody solution should be gently mixed before use.
Note	For laboratory research only, not for drug, diagnostic or other use.

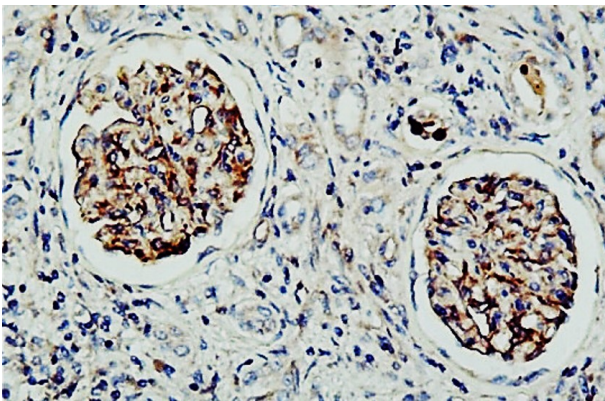
## Bioinformation

---

Gene Symbol	NES
Gene Full Name	nestin
Background	This gene encodes a member of the intermediate filament protein family and is expressed primarily in nerve cells.
Function	Required for brain and eye development. Promotes the disassembly of phosphorylated vimentin intermediate filaments (IF) during mitosis and may play a role in the trafficking and distribution of IF proteins and other cellular factors to daughter cells during progenitor cell division. Required for survival, renewal and mitogen-stimulated proliferation of neural progenitor cells.
Research Area	Cancer antibody; Cell Biology and Cellular Response antibody; Controls and Markers antibody; Developmental Biology antibody; Neuroscience antibody; NSC antibody; Neural Stem Cell Marker antibody; NSC and Neuron Marker antibody; Neuron Development Study antibody
Calculated Mw	177 kDa
PTM	Acetylation, Isopeptide bond, Phosphoprotein, Ubl conjugation
Cellular Localization	Intermediate filament

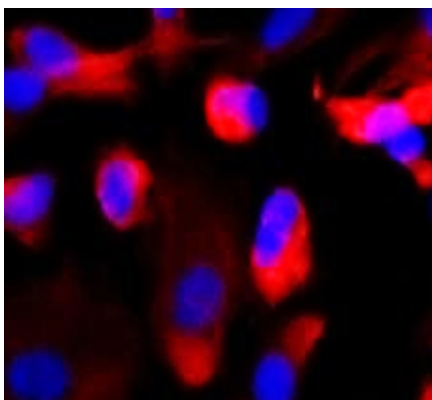
## Images

---



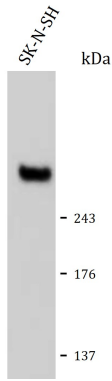
ARG66955 anti-Nestin antibody IHC-P image

Immunohistochemistry: Paraffin-embedded human cancer tissue stained with ARG66955 anti-Nestin antibody at 1:100 dilution.



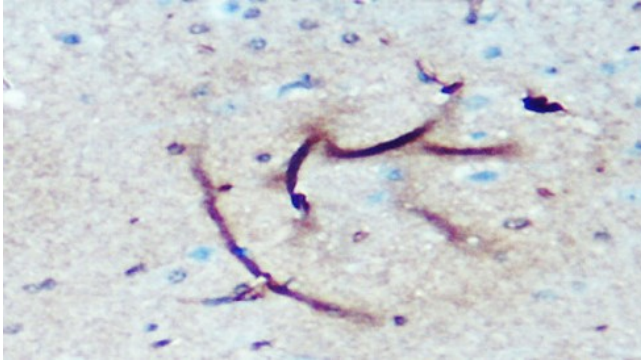
ARG66955 anti-Nestin antibody ICC/IF image

Immunofluorescence: Neuro2A cells were fixed with 4% paraformaldehyde at RT for 10 min, permeabilized with 0.1% NP-40 at RT for 10 min and then cells were blocked with 5% BSA at RT for 30 min and stained with ARG66955 anti-Nestin antibody (red) at 1:200 dilution at 4°C for overnight. DAPI (blue) was used for nuclear staining.



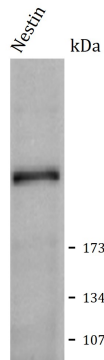
ARG66955 anti-Nestin antibody WB image

Western blot: SK-N-SH stained with ARG66955 anti-Nestin antibody at 1:1000 dilution.



ARG66955 anti-Nestin antibody IHC-P image

Immunohistochemistry: Paraffin-embedded human cancer tissue stained with ARG66955 anti-Nestin antibody at 1:100 dilution.



ARG66955 anti-Nestin antibody WB image

Western blot: Nestin stained with ARG66955 anti-Nestin antibody at 1:1000 dilution.