

ARG67010 anti-PAX6 antibody

Package: 100 µl
Store at: -20°C

Summary

Product Description	Rabbit Polyclonal antibody recognizes PAX6
Tested Reactivity	Hu, Ms
Predict Reactivity	Rat
Tested Application	ICC/IF, IHC-P, WB
Host	Rabbit
Clonality	Polyclonal
Isotype	IgG
Target Name	PAX6
Species	Human
Immunogen	Synthetic peptide around the middle region of Human PAX6.
Conjugation	Un-conjugated
Alternate Names	MGDA; Aniridia type II protein; AN; Oculorhombin; Paired box protein Pax-6; AN2; WAGR; FVH1; D11S812E

Application Instructions

Application table	Application	Dilution
	ICC/IF	1:200 - 1:300
	IHC-P	1:50 - 1:400
	WB	1:500 - 1:1000
Application Note	* The dilutions indicate recommended starting dilutions and the optimal dilutions or concentrations should be determined by the scientist.	
Observed Size	~ 47 kDa	

Properties

Form	Liquid
Purification	Affinity purified.
Buffer	100 mM Tris Glycine (pH 7.0), 0.025% ProClin 300, 1%BSA and 20% Glycerol.
Preservative	0.025% ProClin 300
Stabilizer	1%BSA and 20% Glycerol
Storage instruction	For continuous use, store undiluted antibody at 2-8°C for up to a week. For long-term storage, aliquot and store at -20°C. Storage in frost free freezers is not recommended. Avoid repeated freeze/thaw cycles. Suggest spin the vial prior to opening. The antibody solution should be gently mixed before use.

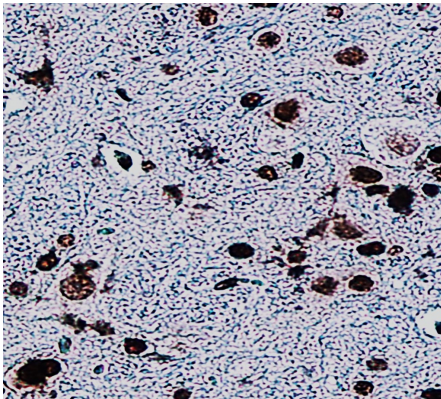
Note

For laboratory research only, not for drug, diagnostic or other use.

Bioinformation

Gene Symbol	PAX6
Gene Full Name	paired box 6
Background	This gene encodes a homeobox and paired domain-containing protein that binds DNA and functions as a regulator of transcription. Activity of this protein is key in the development of neural tissues, particularly the eye. This gene is regulated by multiple enhancers located up to hundreds of kilobases distant from this locus. Mutations in this gene or in the enhancer regions can cause ocular disorders such as aniridia and Peter's anomaly. Use of alternate promoters and alternative splicing result in multiple transcript variants encoding different isoforms. [provided by RefSeq, Jul 2015]
Function	Transcription factor with important functions in the development of the eye, nose, central nervous system and pancreas. Required for the differentiation of pancreatic islet alpha cells (By similarity). Competes with PAX4 in binding to a common element in the glucagon, insulin and somatostatin promoters. Regulates specification of the ventral neuron subtypes by establishing the correct progenitor domains (By similarity). Isoform 5a appears to function as a molecular switch that specifies target genes. [UniProt]
Calculated Mw	47 kDa
PTM	Ubiquitinated by TRIM11, leading to ubiquitination and proteasomal degradation. [UniProt]

Images



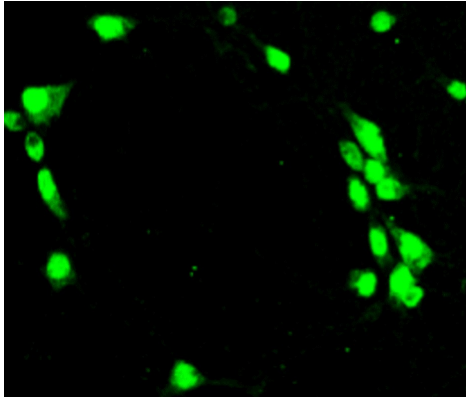
ARG67010 anti-PAX6 antibody IHC-P image

Immunohistochemistry: Paraffin-embedded mouse tissue stained with ARG67010 anti-PAX6 antibody at 1:400 dilution.



ARG67010 anti-PAX6 antibody WB image

Western blot: 293T stained with ARG67010 anti-PAX6 antibody at 10% SDS-PAGE.



ARG67010 anti-PAX6 antibody ICC/IF

Immunocytochemistry: Formalin-fixed and paraffin-embedded prostate cell stained with ARG67010 anti-PAX6 antibody at 1:300 dilution.