

ARG67051
anti-CXCL5 antibodyPackage: 100 µl
Store at: -20°C

Summary

Product Description	Rabbit Polyclonal antibody recognizes CXCL5
Tested Reactivity	Hu
Predict Reactivity	Ms, Rat
Tested Application	ELISA, ICC/IF, IHC-P
Host	Rabbit
Clonality	Polyclonal
Isotype	IgG
Target Name	CXCL5
Species	Human
Immunogen	Synthetic peptide corresponding to aa. 65-114 of Human CXCL5.
Conjugation	Un-conjugated
Alternate Names	Neutrophil-activating peptide ENA-78; Epithelial-derived neutrophil-activating protein 78; SCYB5; Small-inducible cytokine B5; C-X-C motif chemokine 5; 9-78; 8-78; 1-78; ENA-78

Application Instructions

Application table	Application	Dilution
	ELISA	1:10000-1:20000
	ICC/IF	1:50
	IHC-P	1:50-1:200
Application Note	IHC-P: Antigen Retrieval: Boil tissue section in Sodium Citrate buffer (pH 6.0) followed by cooling at RT for 20 min. * The dilutions indicate recommended starting dilutions and the optimal dilutions or concentrations should be determined by the scientist.	

Properties

Form	Liquid
Purification	affinity chromatography
Buffer	PBS, 0.02% Sodium azide, 50% Glycerol and 0.5% BSA.
Preservative	0.02% Sodium azide
Stabilizer	50% Glycerol and 0.5% BSA
Concentration	1 mg/ml
Storage instruction	For continuous use, store undiluted antibody at 2-8°C for up to a week. For long-term storage, aliquot and store at -20°C or below. Storage in frost free freezers is not recommended. Avoid repeated

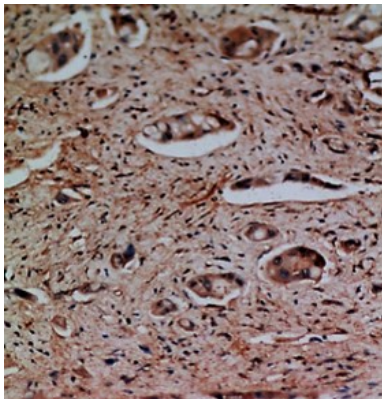
freeze/thaw cycles. Suggest spin the vial prior to opening. The antibody solution should be gently mixed before use.

Note For laboratory research only, not for drug, diagnostic or other use.

Bioinformation

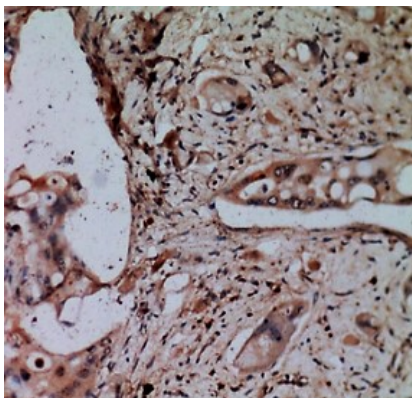
Gene Symbol	CXCL5
Gene Full Name	chemokine (C-X-C motif) ligand 5
Background	This gene encodes a protein that is a member of the CXC subfamily of chemokines. Chemokines, which recruit and activate leukocytes, are classified by function (inflammatory or homeostatic) or by structure. This protein is proposed to bind the G-protein coupled receptor chemokine (C-X-C motif) receptor 2 to recruit neutrophils, to promote angiogenesis and to remodel connective tissues. This protein is thought to play a role in cancer cell proliferation, migration, and invasion. [provided by RefSeq, May 2013]
Function	Involved in neutrophil activation. In vitro, ENA-78(8-78) and ENA-78(9-78) show a threefold higher chemotactic activity for neutrophil granulocytes. [UniProt]
Calculated Mw	12 kDa
PTM	N-terminal processed forms ENA-78(8-78) and ENA-78(9-78) are produced by proteolytic cleavage after secretion from peripheral blood monocytes.
Cellular Localization	Secreted

Images



ARG67051 anti-CXCL5 antibody IHC-P image

Immunohistochemistry: Formalin-fixed and paraffin-embedded human pancreas cancer stained with ARG67051 anti-CXCL5 antibody at 1:200 dilution.



ARG67051 anti-CXCL5 antibody IHC-P image

Immunohistochemistry: Formalin-fixed and paraffin-embedded human pancreas cancer stained with ARG67051 anti-CXCL5 antibody at 1:200 dilution.