

**ARG70191**  
**Mouse IGF2 recombinant protein (Active) (His-tagged, N-ter)**Package: 100 µg, 20 µg  
Store at: -20°C

### Summary

Product Description	E. coli expressed, His-tagged (N-ter) Active Mouse IGF2 recombinant protein
Tested Application	SDS-PAGE
Target Name	IGF2
Species	Mouse
A.A. Sequence	Ala25 - Glu91
Expression System	E. coli
Activity	Active
Alternate Names	Somatomedin-A; Insulin-like growth factor II; IGF-II; PP9974; GRDF; C11orf43; T3M-11-derived growth factor

### Properties

Form	Powder
Purification Note	Endotoxin level is less than 0.1 EU/µg of the protein, as determined by the LAL test.
Purity	> 98% (by SDS-PAGE)
Buffer	PBS (pH 8.0)
Reconstitution	It is recommended to reconstitute the lyophilized protein in sterile water to a concentration not less than 200 µg/mL and incubate the stock solution for at least 20 min at room temperature to make sure the protein is dissolved completely.
Storage instruction	For long term, lyophilized protein should be stored at -20°C or -80°C. After reconstitution, aliquot and store at -20°C or -80°C for up to one month. Storage in frost free freezers is not recommended. Avoid repeated freeze/thaw cycles. Suggest spin the vial prior to opening.
Note	For laboratory research only, not for drug, diagnostic or other use.

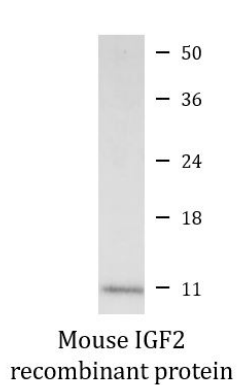
### Bioinformation

Gene Symbol	IGF2
Gene Full Name	insulin-like growth factor 2
Background	This gene encodes a member of the insulin family of polypeptide growth factors, which are involved in development and growth. It is an imprinted gene, expressed only from the paternal allele, and epigenetic changes at this locus are associated with Wilms tumour, Beckwith-Wiedemann syndrome, rhabdomyosarcoma, and Silver-Russell syndrome. A read-through INS-IGF2 gene exists, whose 5' region overlaps the INS gene and the 3' region overlaps this gene. Alternatively spliced transcript variants encoding different isoforms have been found for this gene. [provided by RefSeq, Oct 2010]
Function	<p>The insulin-like growth factors possess growth-promoting activity. In vitro, they are potent mitogens for cultured cells. IGF-II is influenced by placental lactogen and may play a role in fetal development.</p> <p>Preptin undergoes glucose-mediated co-secretion with insulin, and acts as physiological amplifier of glucose-mediated insulin secretion. Exhibits osteogenic properties by increasing osteoblast mitogenic activity through phosphoactivation of MAPK1 and MAPK3. [UniProt]</p>

PTM	O-glycosylated with core 1 or possibly core 8 glycans. Thr-96 is a minor glycosylation site compared to Thr-99.  Proteolytically processed by PCSK4, proIGF2 is cleaved at Arg-128 and Arg-92 to generate big-IGF2 and mature IGF2. [UniProt]
Cellular Localization	Secreted. [UniProt]

## Images

---



ARG70191 Mouse IGF2 recombinant protein (Active) (His-tagged, N-ter) SDS-PAGE image

SDS-PAGE analysis of ARG70191 Mouse IGF2 recombinant protein (Active) (His-tagged, N-ter).