

**ARG70288**  
**Human IL6R alpha recombinant protein (His-tagged, C-ter)**Package: 100 µg  
Store at: -20°C

### Summary

Product Description	HEK293 expressed, His-tagged (C-ter) Human IL6R alpha recombinant protein.
Tested Reactivity	Hu
Tested Application	Binding, SDS-PAGE
Target Name	IL6R alpha
Species	Human
A.A. Sequence	Leu20 - Asp358 of Human IL6R alpha (NP_000556.1) with 6X His tag at the C - terminus.
Expression System	HEK293
Alternate Names	IL-6R-alpha; CD126; IL6RA; IL-6 receptor subunit alpha; IL-6R subunit alpha; IL6Q; CD antigen CD126; IL-6R 1; IL-6RA; gp80; IL6RQ; Interleukin-6 receptor subunit alpha; IL-6R-1; Membrane glycoprotein 80

### Application Instructions

Application Note	Binding activity test: Measured by its binding ability in a functional ELISA. Immobilized Human IL6R at 1 µg/ml (100 µl/well) can bind Human IL-6 with a linear range of 2-15ng/ml.
------------------	-------------------------------------------------------------------------------------------------------------------------------------------------------------------------------------

### Properties

Form	Powder
Purification Note	0.22 µm filter sterilized. Endotoxin level is 92% (by SDS-PAGE)
Buffer	PBS (pH 7.4)
Reconstitution	Reconstitute to a concentration of 0.1 - 0.5 mg/ml in sterile distilled water.
Storage instruction	For long term, lyophilized protein should be stored at -20°C or -80°C. After reconstitution, aliquot and store at -20°C for up to one month, at 2-8°C for up to one week. Storage in frost free freezers is not recommended. Avoid repeated freeze/thaw cycles. Suggest spin the vial prior to opening.
Note	For laboratory research only, not for drug, diagnostic or other use.

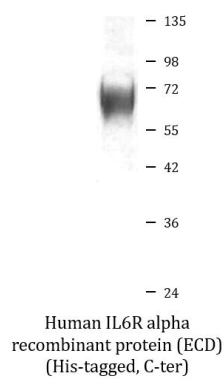
### Bioinformation

Gene Symbol	IL6R
Gene Full Name	interleukin 6 receptor
Background	This gene encodes a subunit of the interleukin 6 (IL6) receptor complex. Interleukin 6 is a potent pleiotropic cytokine that regulates cell growth and differentiation and plays an important role in the immune response. The IL6 receptor is a protein complex consisting of this protein and interleukin 6 signal transducer (IL6ST/GP130/IL6-beta), a receptor subunit also shared by many other cytokines. Dysregulated production of IL6 and this receptor are implicated in the pathogenesis of many diseases, such as multiple myeloma, autoimmune diseases and prostate cancer. Alternatively spliced transcript variants encoding distinct isoforms have been reported. A pseudogene of this gene is found on chromosome 9. [provided by RefSeq, May 2011]

Function	Part of the receptor for interleukin 6. Binds to IL6 with low affinity, but does not transduce a signal (PubMed:28265003). Signal activation necessitate an association with IL6ST. Activation may lead to the regulation of the immune response, acute-phase reactions and hematopoiesis.  Low concentration of a soluble form of IL6 receptor acts as an agonist of IL6 activity. [UniProt]
Calculated Mw	52 kDa
PTM	A short soluble form may also be released from the membrane by proteolysis. [UniProt]
Cellular Localization	Isoform 1: Basolateral cell membrane; Single-pass type I membrane protein. Isoform 2: Secreted. [UniProt]

## Images

---



ARG70288 Human IL6R alpha recombinant protein (ECD) (His-tagged, C-ter) SDS-PAGE image

SDS-PAGE analysis of ARG70288 Human IL6R alpha recombinant protein (ECD) (His-tagged, C-ter).