

ARG81571 Human Complement factor H ELISA Kit

Package: 96 wells
Store at: 4°C

Component

Cat. No.	Component Name	Package	Temp
ARG81571-001	Antibody-coated microplate	8 X 12 strips	4°C. Unused strips should be sealed tightly in the air-tight pouch.
ARG81571-002	Standard	2 X 100 ng/vial	4°C
ARG81571-003	Standard/Sample diluent	30 ml (Ready to use)	4°C
ARG81571-004	Antibody conjugate concentrate (100X)	1 vial (100 µl)	4°C
ARG81571-005	Antibody diluent buffer	12 ml (Ready to use)	4°C
ARG81571-006	HRP-Streptavidin concentrate (100X)	1 vial (100 µl)	4°C
ARG81571-007	HRP-Streptavidin diluent buffer	12 ml (Ready to use)	4°C
ARG81571-008	25X Wash buffer	20 ml	4°C
ARG81571-009	TMB substrate	10 ml (Ready to use)	4°C (Protect from light)
ARG81571-010	STOP solution	10 ml (Ready to use)	4°C
ARG81571-011	Plate sealer	4 strips	Room temperature

Summary

Product Description	ARG81571 Human Complement factor H ELISA Kit is an Enzyme Immunoassay kit for the quantification of Human Complement factor H in serum, plasma (heparin, EDTA), urine and cell culture supernatants.
Tested Reactivity	Hu
Tested Application	ELISA
Specificity	There is no detectable cross-reactivity with other relevant proteins.
Target Name	Complement factor H
Conjugation	HRP
Conjugation Note	Substrate: TMB and read at 450 nm.
Sensitivity	0.78 ng/ml
Sample Type	Serum, plasma (heparin, EDTA), urine and cell culture supernatants.
Standard Range	1.56 - 100 ng/ml
Sample Volume	100 µl

Precision	Intra-Assay CV: 6.7% Inter-Assay CV: 8.2%
Alternate Names	Complement factor H; ARMD4; HF1; HF2; AMBP1; ARMS1; FHL1; HUS; FH; AHUS1; H factor 1; HF; CFHL3

Application Instructions

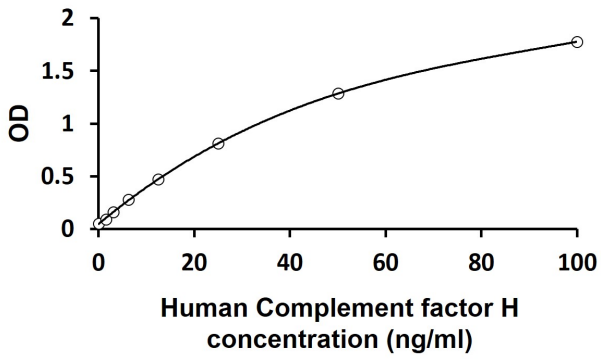
Assay Time ~ 5 hours

Properties

Form	96 well
Storage instruction	Store the kit at 2-8°C. Keep microplate wells sealed in a dry bag with desiccants. Do not expose test reagents to heat, sun or strong light during storage and usage. Please refer to the product user manual for detail temperatures of the components.
Note	For laboratory research only, not for drug, diagnostic or other use.

Bioinformation

Gene Symbol	CFH
Gene Full Name	complement factor H
Background	This gene is a member of the Regulator of Complement Activation (RCA) gene cluster and encodes a protein with twenty short consensus repeat (SCR) domains. This protein is secreted into the bloodstream and has an essential role in the regulation of complement activation, restricting this innate defense mechanism to microbial infections. Mutations in this gene have been associated with hemolytic-uremic syndrome (HUS) and chronic hypocomplementemic nephropathy. Alternate transcriptional splice variants, encoding different isoforms, have been characterized. [provided by RefSeq, Oct 2011]
Function	Factor H functions as a cofactor in the inactivation of C3b by factor I and also increases the rate of dissociation of the C3bBb complex (C3 convertase) and the (C3b)NBB complex (C5 convertase) in the alternative complement pathway. [UniProt]
Highlight	Related products: Complement component antibodies ; Complement component ELISA Kits ; Complement component Duos / Panels ; New ELISA data calculation tool: Simplify the ELISA analysis by GainData



ARG81571 Human Complement factor H ELISA Kit standard curve image

ARG81571 Human Complement factor H ELISA Kit results of a typical standard run with optical density reading at 450 nm.