

ARG82719 Human Complement C1s ELISA Kit

Package: 96 wells
Store at: 4°C

Component

Cat. No.	Component Name	Package	Temp
ARG82719-001	Antibody-coated microplate	8 X 12 strips	4°C. Unused strips should be sealed tightly in the air-tight pouch.
ARG82719-002	Standard	2 X 50 ng/vial	4°C
ARG82719-003	Standard/Sample diluent	30 ml (Ready to use)	4°C
ARG82719-004	Antibody conjugate concentrate (100X)	1 vial (100 µl)	4°C
ARG82719-005	Antibody diluent buffer	12 ml (Ready to use)	4°C
ARG82719-006	HRP-Streptavidin concentrate (100X)	1 vial (100 µl)	4°C
ARG82719-007	HRP-Streptavidin diluent buffer	12 ml (Ready to use)	4°C
ARG82719-008	25X Wash buffer	20 ml	4°C
ARG82719-009	TMB substrate	10 ml (Ready to use)	4°C (Protect from light)
ARG82719-010	STOP solution	10 ml (Ready to use)	4°C
ARG82719-011	Plate sealer	4 strips	Room temperature

Summary

Product Description	ARG82719 Human Complement C1s ELISA Kit is an Enzyme Immunoassay kit for the quantification of Human Complement C1s in serum, plasma (EDTA, heparin, citrate), cell culture supernatants, urine and milk.
Tested Reactivity	Hu
Tested Application	ELISA
Target Name	Complement C1s
Conjugation	HRP
Conjugation Note	Substrate: TMB and read at 450 nm.
Sensitivity	0.39 ng/ml
Sample Type	Serum, plasma (EDTA, heparin, citrate), cell culture supernatants, urine and milk.
Standard Range	0.78 - 50 ng/ml
Sample Volume	100 µl
Precision	Intra-Assay CV: 5.8%

Inter-Assay CV: 5.8%

Alternate Names Complement component 1 subcomponent s; EC 3.4.21.42; Complement C1s subcomponent; C1 esterase

Application Instructions

Assay Time ~ 5 hours

Properties

Form 96 well

Storage instruction Store the kit at 2-8°C. Keep microplate wells sealed in a dry bag with desiccants. Do not expose test reagents to heat, sun or strong light during storage and usage. Please refer to the product user manual for detail temperatures of the components.

Note For laboratory research only, not for drug, diagnostic or other use.

Bioinformation

Gene Symbol C1S

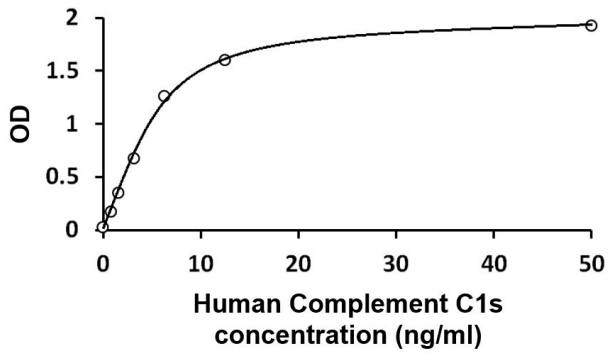
Gene Full Name complement component 1, s subcomponent

Background This gene encodes a serine protease, which is a major constituent of the human complement subcomponent C1. C1s associates with two other complement components C1r and C1q in order to yield the first component of the serum complement system. Defects in this gene are the cause of selective C1s deficiency. [provided by RefSeq, Mar 2009]

Function C1s B chain is a serine protease that combines with C1q and C1r to form C1, the first component of the classical pathway of the complement system. C1r activates C1s so that it can, in turn, activate C2 and C4. [UniProt]

Highlight Related products:
[Complement component antibodies](#); [Complement component ELISA Kits](#); [Complement component Duos / Panels](#);
New ELISA data calculation tool:
[Simplify the ELISA analysis by GainData](#)

PTM The iron and 2-oxoglutarate dependent 3-hydroxylation of aspartate and asparagine is (R) stereospecific within EGF domains. [UniProt]



ARG82719 Human Complement C1s ELISA Kit standard curve image

ARG82719 Human Complement C1s ELISA Kit results of a typical standard run with optical density reading at 450 nm.