

ARG83509 arigoPLEX® Human Inflammatory Cytokine Multiplex ELISA Kit (IFN- gamma, IL1 alpha, IL1 beta, IL6, IL8, GM-CSF, TNF-alpha, MCP1)

Package: 96 wells
Store at: 4°C, -20°C

Summary

| | |
|---------------------|---|
| Product Description | ARG83509 arigoPLEX® Human Inflammatory Cytokine Multiplex ELISA Kit (IFN-gamma, IL1 alpha, IL1 beta, IL6, IL8, GM-CSF, TNF-alpha, MCP1) is an Enzyme Immunoassay kit for the quantification of IFN-gamma, IL1 alpha, IL1 beta, IL6, IL8, GM-CSF, TNF-alpha and MCP1 in serum, plasma and cell culture supernatant . See all Multiplex ELISA kits |
| Tested Reactivity | Hu |
| Tested Application | ELISA |
| Target Name | Inflammatory Cytokine |
| Conjugation | HRP |
| Conjugation Note | Substrate: TMB and read at 450 nm. |
| Sensitivity | IFN-gamma: 7.8 pg/ml IL1 alpha: 15.625 pg/ml IL1 beta: 7.8 pg/ml IL6: 15.625 pg/ml IL8: 13.43 pg/ml GM-CSF: 7.8 pg/ml TNF alpha: 15.625 pg/ml MCP1: 15.625 pg/ml |
| Sample Type | Serum, plasma and cell culture supernatants. |
| Standard Range | IFN - gamma: 15.625 - 500 pg/ml IL1 alpha: 31.25 - 1000 pg/ml IL1 beta: 15.625 - 500 pg/ml IL6: 31.25 - 1000 pg/ml IL8: 46.875 - 1500 pg/ml GM - CSF: 15.625 - 500 pg/ml TNF alpha: 31.25 - 1000 pg/ml MCP1: 31.25 - 1000 pg/ml |
| Sample Volume | 50 µl |

Application Instructions

Assay Time 4.5 hour

Properties

| | |
|---------------------|--|
| Form | 96 well |
| Storage instruction | Store components at 4°C or -20°C. Keep microplate wells sealed in a dry bag with desiccants. Do not expose test reagents to heat, sun or strong light during storage and usage. Please refer to the product user manual for detail temperatures of the components. |

Bioinformation

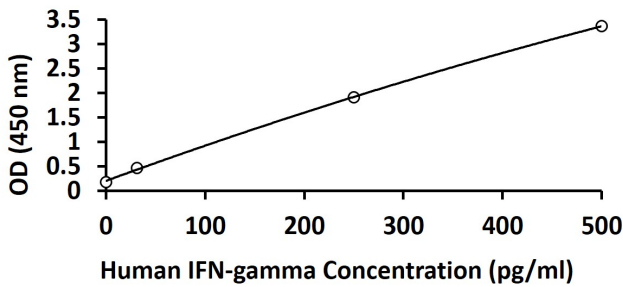
Gene Symbol IFN-gamma; IL1 alpha; IL1 beta; IL6; IL8; GM-CSF; TNF-alpha and MCP1

Highlight Related products:
[Inflammation antibodies; Inflammation Duos / Panels;](#)
 Related news:
[HMGB1 in inflammation](#)
[Inflammatory Cytokines](#)
[Exploring Antiviral Immune Response](#)
 New ELISA data calculation tool:
[Simplify the ELISA analysis by GainData](#)

Images

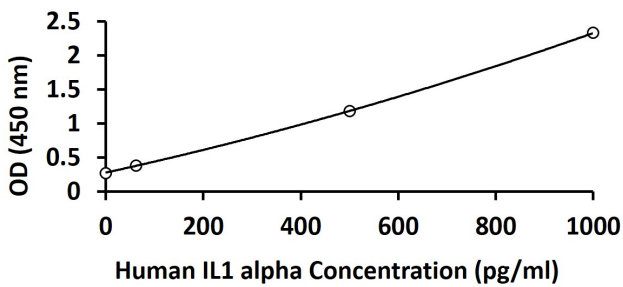
| | 1 | 2 | 3 | 4 | 5 | 6 | 7 | 8 | 9 | 10 | 11 | 12 |
|---|---------------|---------------|---------------|---------------|---------------|---------------|---------------|---------------|---------------|---------------|---------------|---------------|
| A | IFN- γ | IFN- γ | IFN- γ | IFN- γ | IFN- γ | IFN- γ | IFN- γ | IFN- γ | IFN- γ | IFN- γ | IFN- γ | IFN- γ |
| B | IL-1 α | IL-1 α | IL-1 α | IL-1 α | IL-1 α | IL-1 α | IL-1 α | IL-1 α | IL-1 α | IL-1 α | IL-1 α | IL-1 α |
| C | IL-1 β | IL-1 β | IL-1 β | IL-1 β | IL-1 β | IL-1 β | IL-1 β | IL-1 β | IL-1 β | IL-1 β | IL-1 β | IL-1 β |
| D | IL-6 | IL-6 | IL-6 | IL-6 | IL-6 | IL-6 | IL-6 | IL-6 | IL-6 | IL-6 | IL-6 | IL-6 |
| E | IL-8 | IL-8 | IL-8 | IL-8 | IL-8 | IL-8 | IL-8 | IL-8 | IL-8 | IL-8 | IL-8 | IL-8 |
| F | GMCSF | GMCSF | GMCSF | GMCSF | GMCSF | GMCSF | GMCSF | GMCSF | GMCSF | GMCSF | GMCSF | GMCSF |
| G | TNF- α | TNF- α | TNF- α | TNF- α | TNF- α | TNF- α | TNF- α | TNF- α | TNF- α | TNF- α | TNF- α | TNF- α |
| H | MCP-1 | MCP-1 | MCP-1 | MCP-1 | MCP-1 | MCP-1 | MCP-1 | MCP-1 | MCP-1 | MCP-1 | MCP-1 | MCP-1 |

Antibodies Coating Pattern In Microtiter Plate of ARG83509 arigoPLEX® Human Inflammatory Cytokine Multiplex ELISA Kit (IFN-gamma, IL1 alpha, IL1 beta, IL6, IL8, GM-CSF, TNF-alpha, MCP1)



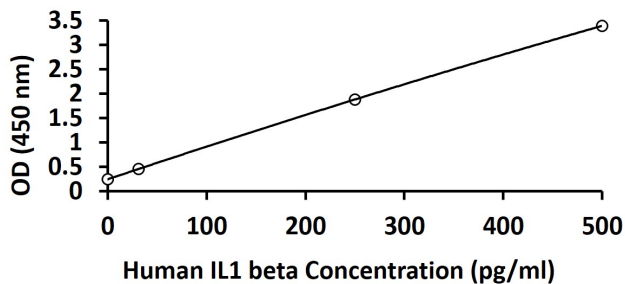
ARG83509 arigoPLEX® Human Inflammatory Cytokine Multiplex ELISA Kit standard curve image

ARG83509 arigoPLEX® Human Inflammatory Cytokine Multiplex ELISA Kit results of a typical standard for Human IFN-gamma run with optical density reading at 450 nm.



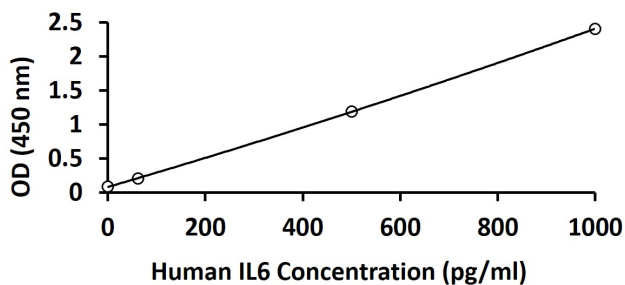
ARG83509 arigoPLEX® Human Inflammatory Cytokine Multiplex ELISA Kit standard curve image

ARG83509 arigoPLEX® Human Inflammatory Cytokine Multiplex ELISA Kit results of a typical standard for Human IL1 alpha run with optical density reading at 450 nm.



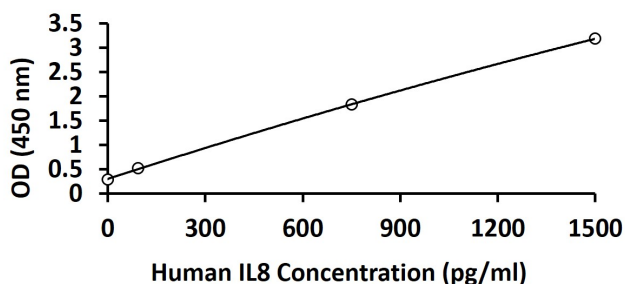
ARG83509 arigoPLEX® Human Inflammatory Cytokine Multiplex ELISA Kit standard curve image

ARG83509 arigoPLEX® Human Inflammatory Cytokine Multiplex ELISA Kit results of a typical standard for Human IL1 beta run with optical density reading at 450 nm.



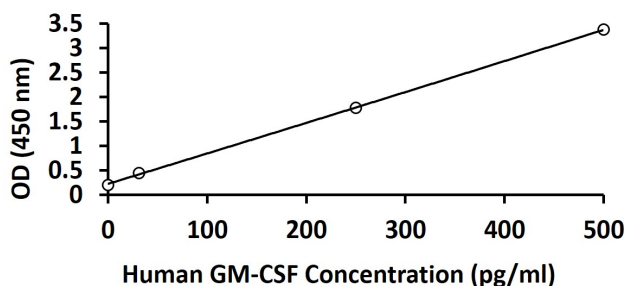
ARG83509 arigoPLEX® Human Inflammatory Cytokine Multiplex ELISA Kit standard curve image

ARG83509 arigoPLEX® Human Inflammatory Cytokine Multiplex ELISA Kit results of a typical standard for Human IL6 run with optical density reading at 450 nm.



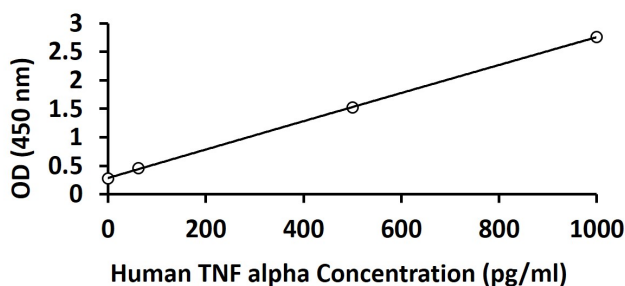
ARG83509 arigoPLEX® Human Inflammatory Cytokine Multiplex ELISA Kit standard curve image

ARG83509 arigoPLEX® Human Inflammatory Cytokine Multiplex ELISA Kit results of a typical standard for Human IL8 run with optical density reading at 450 nm.



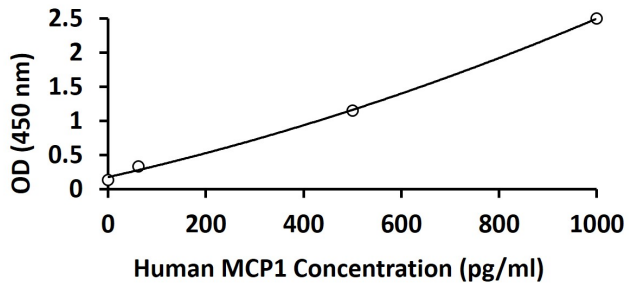
ARG83509 arigoPLEX® Human Inflammatory Cytokine Multiplex ELISA Kit standard curve image

ARG83509 arigoPLEX® Human Inflammatory Cytokine Multiplex ELISA Kit results of a typical standard for Human GM-CSF run with optical density reading at 450 nm.



ARG83509 arigoPLEX® Human Inflammatory Cytokine Multiplex ELISA Kit standard curve image

ARG83509 arigoPLEX® Human Inflammatory Cytokine Multiplex ELISA Kit results of a typical standard for Human TNF alpha run with optical density reading at 450 nm.



ARG83509 arigoPLEX® Human Inflammatory Cytokine Multiplex ELISA Kit standard curve image

ARG83509 arigoPLEX® Human Inflammatory Cytokine Multiplex ELISA Kit results of a typical standard for Human MCP1 run with optical density reading at 450 nm.